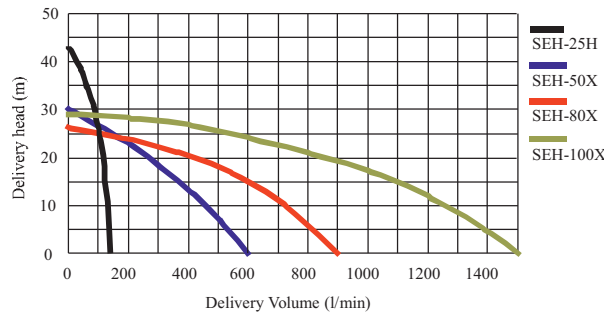
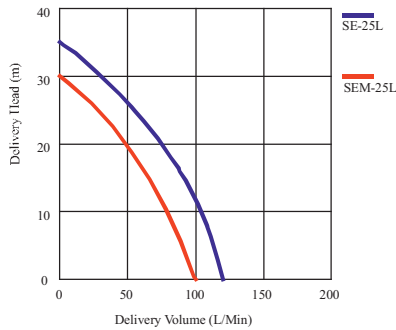


**ENGINE PUMPS, 2 STROKE ENGINE POWERED**

Light 2 stroke engine pumps for multi-purpose use, light, simple to use and reliable.

Model	Engine	Outlet	kg	W x L x H mm	Max l/min	Max Head/m	Code	Price
SEM-25L	*TU22 Mitsubishi	1"	6.5	345 x 260 x 345	100	30	050-003	
SE-25L	EC025 Robin	1"	6	310 x 255 x 347	120	35	050-005	

\*Changing to TLE20 Approx April '08 to conform with emmissions



SEM-25L



SEH-25H

**ENGINE PUMPS, HONDA POWERED WITH OIL ALERT \*except GXH50**

Ideal for clean and black water applications, construction and agricultural duties, heavy-duty build with iron impeller and volute and carbon/ceramic mechanical seal in full crash frame.

Model	Engine	Outlet	kg	W x L x H mm	Max l/min	Max Head/m	Code	Price
SEH-25H	GXH50*	1"	15	360 x 350 x 430	150	35	050-015	
SEH-50x	GX120	2"	24	506 x 402 x 421	620	30	050-022	
SEH-80x	GX160	3"	32	525 x 399 x 476	900	26	050-032	
SEH-100x	GX240	4"	55	650 x 453 x 660	1450	28	050-038	



SEH-80X

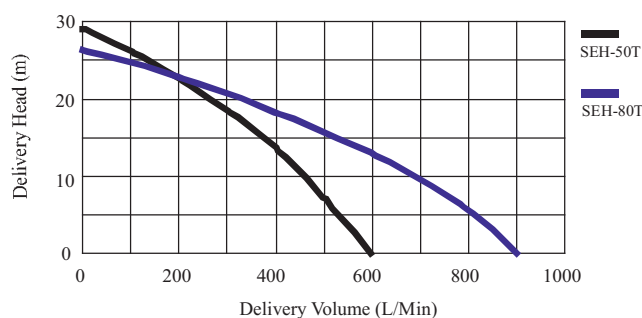
**SEMI TRASH ENGINE PUMPS, HONDA POWERED WITH OIL ALERT**

Semi Trash pumps with FCD (Spheroidal Graphite Iron Impeller) and volutes and also a SIC mechanical seal for aggressive applications, solids handling ability 8mm.

Model	Engine	Outlet	kg	W x L x H mm	Max l/min	Max Head/m	Code	Price
SEH-50T	GX120	2"	25	493 x 377 x 420	600	29	050-028	
SEH-80T	GX160	3"	35	530 x 423 x 488	900	26	050-048	

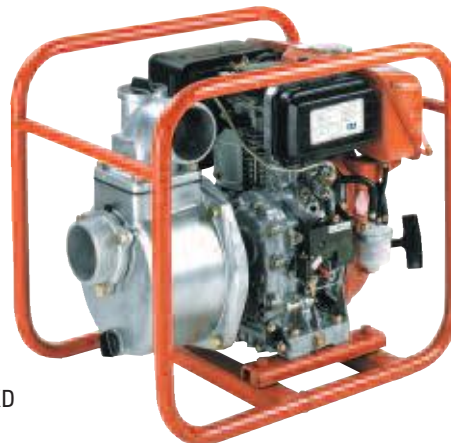
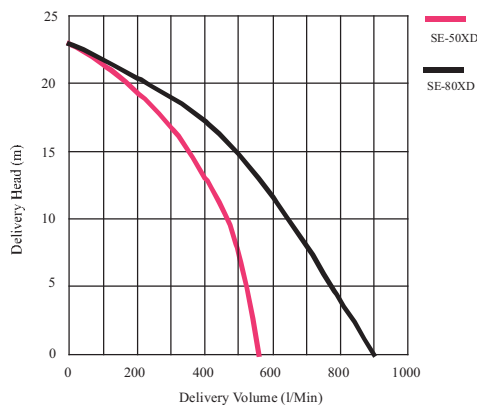


SEH-80T



## DIESEL POWERED CENTRIFUGAL PUMPS RECOIL START

Model	Engine	Outlet	kg	W x L x H mm	Max l/min	Max Head/m	Code	Price
SE-50XD	ROBIN DY23	2"	48	583 x 423 x 515	560	23	050-070	
SE-80XD	ROBIN DY23	3"	51	583 x 423 x 515	900	23	050-075	



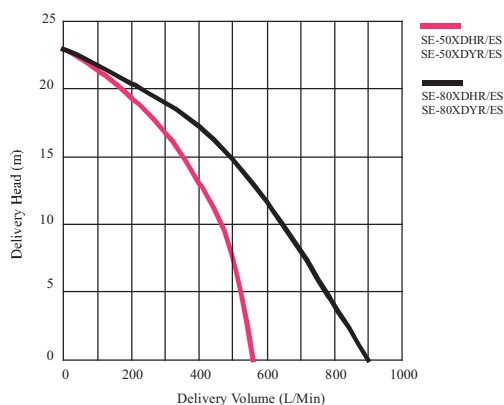
SE-80XD

## DIESEL POWERED CENTRIFUGAL PUMPS RECOIL START C/W FULL CRASH FRAME & WHEEL KIT

Model	Engine	Outlet	kg	W x L x H mm	Max l/min	Max Head/m	Code	Price
SE-50XDHR	HATZ 1B20	2"	55	700 x 800 x 710	560	23	050-070HR	
SE-50XDYR	YANMAR L48	2"	55	700 x 800 x 710	560	23	050-070YR	
SE-80XDHR	HATZ 1B20	3"	58	700 x 800 x 710	900	23	050-075HR	
SE-80XDYR	YANMAR L48	3"	58	700 x 800 x 710	900	23	050-075YR	

## DIESEL POWERED CENTRIFUGAL PUMPS ELECTRIC START C/W FULL CRASH FRAME & WHEEL KIT

Model	Engine	Outlet	kg	W x L x H mm	Max l/min	Max Head/m	Code	Price
SE-50XDHES	HATZ 1B20	2"	65	700 x 800 x 710	560	23	050-070HES	
SE-50XDYES	YANMAR L48	2"	65	700 x 800 x 710	560	23	050-070YES	
SE-80XDHES	HATZ 1B20	3"	68	700 x 800 x 710	900	23	050-075HES	
SE-80XDYES	YANMAR L48	3"	68	700 x 800 x 710	900	23	050-075YES	



SE-50XDHES

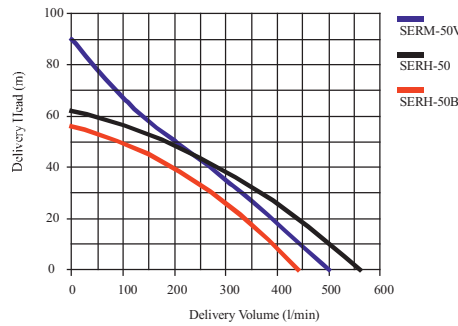
## HIGH PRESSURE PUMPS, HONDA & MITSUBISHI ENGINE POWERED

Petrol Engine High Pressure Pump Sets.

Model	Engine	Inlet/Outlet	kg	W x L x H mm	Max l/min	Max Head/m	Code	Price
SERM-50V	GM182	2" x 2"	34	565 x 460 x 483	500	90	050-041	
SERH-50B	GX160	2" x 2"	38	620 x 380 x 533	400	60	050-042	
SERH-50	GX240	2 1/2" x 2"	49	595 x 420 x 560	550	70	050-072	



SERM-50V



SERH-50B

## DIESEL POWERED HIGH PRESSURE PUMPS RECOIL START C/W FULL CRASH FRAME & WHEEL KIT

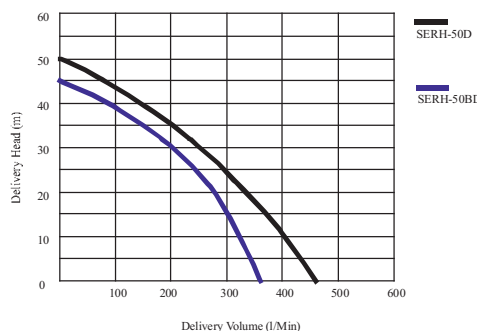
Model	Engine	Inlet/Outlet	kg	W x L x H mm	Max l/min	Max Head/m	Code	Price
SERH-50BDHR	1B20	2" x 2"	55	700 x 800 x 710	350	45	050-043HR	
SERH-50BDYR	L48	2" x 2"	55	700 x 800 x 710	350	45	050-043YR	
SERH-50DHR	1B30	2 1/2" x 2"	60	700 x 800 x 710	450	49	050-044HR	
SERH-50DYR	L70	2 1/2" x 2"	60	700 x 800 x 710	450	49	050-044YR	

## DIESEL POWERED HIGH PRESSURE PUMPS ELECTRIC START C/W FULL CRASH FRAME & WHEEL KIT

Model	Engine	Inlet/Outlet	kg	W x L x H mm	Max l/min	Max Head/m	Code	Price
SERH-50BDHES	1B20	2" x 2"	60	700 x 800 x 710	350	45	050-043HES	
SERH-50BDYES	L48	2" x 2"	60	700 x 800 x 710	350	45	050-043YES	
SERH-50DHES	1B30	2 1/2" x 2"	65	700 x 800 x 710	450	49	050-044HES	
SERH-50DYES	L70	2 1/2" x 2"	65	700 x 800 x 710	450	49	050-044YES	



SERH-50DYES

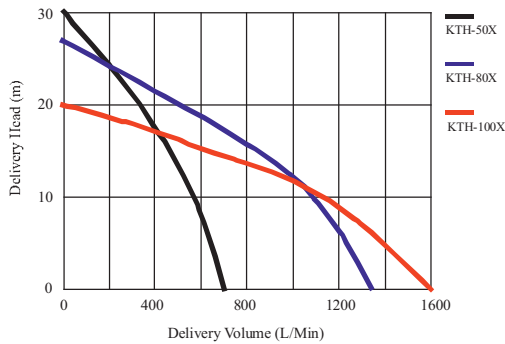


SERH-50BDHES

## TRASH DUTY ENGINE PUMPS, HONDA POWERED WITH OIL ALERT

Petrol engine trash duty pumps for sewage and muck. Large easy off front cover for cleaning SIC mechanical seals and Hi Chrome Impeller and Spheroidal Graphite Iron volute and solid handling up to 2"-20mm / 3" 27mm / 4"-30mm.

Model	Engine	Outlet	kg	W x L x H mm	Max l/min	Max Head/m	Code	Price
KTH50x	GX160	2"	51	656 x 498 x 524	700	30	050-074	
KTH80x	GX240	3"	63	721 x 516 x 585	1340	27	050-076	
KTH-100x	GX340	4"	85	790 x 580 x 675	1600	20	050-078	



KTH-50X



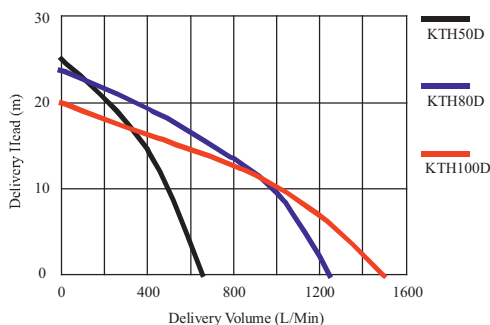
## DIESEL POWERED TRASH PUMPS – RECOIL START C/W FULL CRASH FRAME & WHEEL KIT

Heavy duty Koshin trash duty pumps mounted to Hatz & Yanmar diesel engines. For very dirty water and trash duty. Solids handling up to: 2" - 20mm / 3" - 27mm / 4" - 30mm. SIC Mechanical seals and Hi Chrome impeller and Spheroidal Graphite Iron volute.

Model	Engine	Outlet	kg	W x L x H mm	Max l/min	Max Head/m	Code	Price
KTH-50DHR	Hatz1B20	2"x2"	54	700 x 800 x 710	650	25	050-052HR	
KTY-50DYR	YanmarL48	2"x2"	55	700 x 800 x 710	650	25	050-052YR	
KTH-80DHR	Hatz1B30	3"x3"	99	700 x 800 x 710	1250	24	050-082HR	
KTY-80DYR	YanmarL70	3"x3"	96	700 x 950 x 830	1250	24	050-082YR	
KTH-100DHR	Hatz1B40	4"x4"	140	700 x 950 x 830	1550	20	050-087HR	
KTY-100DYR	YanmarL100	4"x4"	120	700 x 950 x 830	1500	20	050-087YR	

## DIESEL POWERED TRASH PUMPS – ELECTRIC START C/W FULL CRASH FRAME & WHEEL KIT

Model	Engine	Outlet	kg	W x L x H mm	Max l/min	Max Head/m	Code	Price
KTH-50DHES	Hatz1B20	2"x2"	54	700 x 800 x 710	650	25	050-052HES	
KTY-50DYES	YanmarL48	2"x2"	55	700 x 800 x 710	650	25	050-052YES	
KTH-80DHES	Hatz1B30	3"x3"	99	700 x 800 x 710	1250	24	050-082HES	
KTY-80DYES	YanmarL70	3"x3"	96	700 x 950 x 830	1250	24	050-082YES	
KTH-100DHES	Hatz1B40	4"x4"	140	700 x 950 x 830	1550	20	050-087HES	
KTY-100DYES	YanmarL100	4"x4"	120	700 x 950 x 830	1500	20	050-087YES	

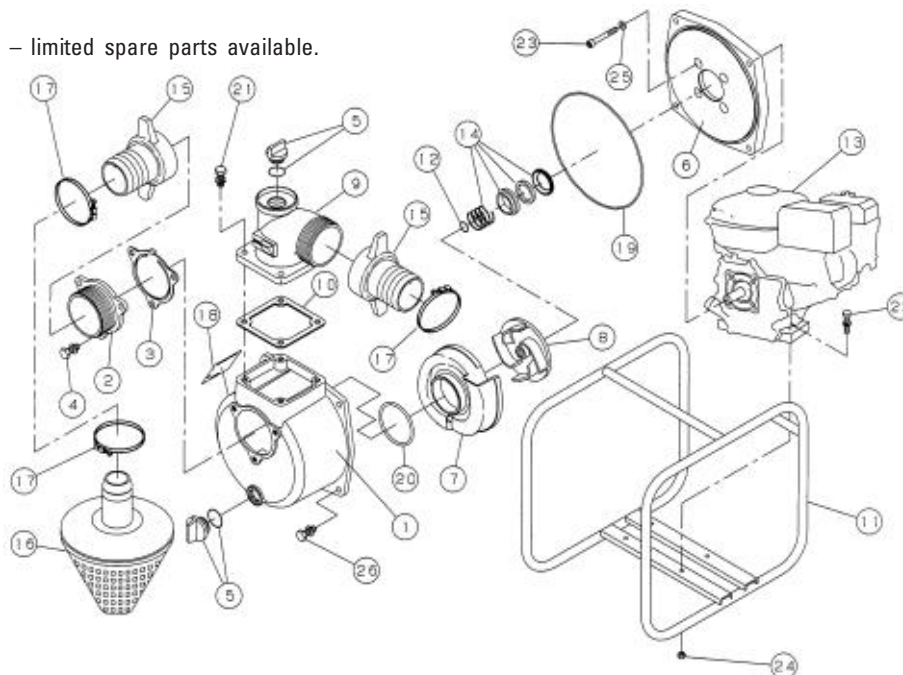


KTH-80DHES



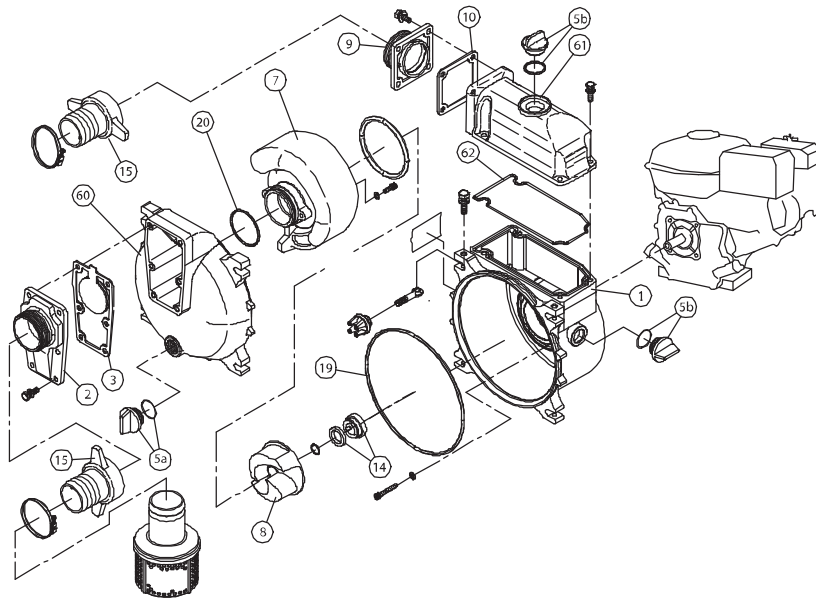
PART -	1	2	3	5a	5b	6	7	8	9	10	14	15	19	20
MODEL	PUMP CASE	SUCTION FLANGE	CHECK VALVE	DRAIN BUNG	FILLER BUNG	FLANGE BRACKET	VOLUTE	IMPELLER	DELIVERY FLANGE	GASKET	SEAL	HOSE TAILS EACH	O RING CASE	O RING VOLUTE
SE-25L ECO-25GR NEW	0113329 050-960	0113325 050-966	0113326 050-967	0148010 050-600	0118450 050-973	0114992 050-963	0112528 050-964	0114993 050-965	N/A	N/A	0140273 050-968	0348015 050-952	890255031 050-969	889855042 050-972
SEM-25L TU-22	0113329 050-960	0113325 050-966	0113326 050-967	0148010 050-600	0118450 050-973	0115987	0115986	0115985	N/A	N/A	0116054	0348015 050-952	890255031 050-969	889855042 050-972
*SCR-25R EY08	200200100	200200650	200900140	200500040	200500040	200200430	200210160	200210150	200200650	200800080	201100021	0348015 050-952	200900340	200900230
*SEH-25 G100	0113330 050-940	0114002 050-947	0113328 050-948	0118078 050-604	0118078 050-604	0110579 050-942	0114225 050-944	0111447 050-946	0111449 050-949	0110593 050-950	0110673 050-951	0348015 050-952	890255043 050-953	889855048 050-954
SEH-25 GXH-50	0113330 050-940	0114002 050-947	0113328 050-948	0118078 050-604	0118078 050-604	0116926	0116994	0116937	0111449 050-949	0110593 050-950	0110685 050-842	0348015 050-952	890255043 050-953	889855048 050-954
*SEH-50X GX120- OLD	0112578 050-684	0112662 050-644	0112665 050-664	0118078 050-604	0118078 050-604	0112579 050-864	0113175 050-743	0111780 050-804	0110556 050-704	0110541 050-724	0110688 050-844	0117026 050-624	0115014 050-784	011279201 050-764
*SEH-50X GX120- NEW	0112578 050-684	0112662 050-644	0112665 050-664	0118078 050-604	0118078 050-604	0112579 050-864	0114640 050-744	0113532 050-805	0110556 050-704	0110541 050-724	0110688 050-844	0117026 050-624	0115014 050-784	011279201 050-764
SEH-50X GX120 BEJ	0112578 050-684	0112662 050-644	0112665 050-664	0118078 050-604	0118078 050-604	0115268	0114640 050-744	0116616	0110556 050-704	0110541 050-724	0114090	0117026 050-624	0115014 050-784	011279201 050-764
*SEH-80X GX-160 OLD	0112795 050-686	0112797 050-646	0112799 050-666	0118078 050-604	0118079 050-607	0112796 050-866	0113176 050-746	0110532 050-806	0110570 050-706	0110584 050-726	0110664 050-846	0117028 050-626	0115015 050-786	0113989 050-766
*SEH-80X GX-160 NEW	0112795 050-686	0112797 050-646	0112799 050-666	0118078 050-604	0118079 050-607	0112796 050-866	0114379 050-747	0114376 050-807	0110570 050-706	0110584 050-726	0110664 050-846	0117028 050-626	0115015 050-786	0113989 050-766
SEH-80X GX-160 BEJ	0112795 050-686	0112797 050-646	0112799 050-666	0118078 050-604	0118079 050-607	0115269	0114379 050-747	0116617	0110570 050-706	0110584 050-726	0114090	0117028 050-626	0115015 050-786	0113989 050-764
SEH-50T GX-120	0112578 050-684	0112662 050-644	0112665 050-664	0118078 050-604	0118078 050-604	0114027	0115169	0115168	0110556 050-704	0110541 050-724	0115159	0117026 050-624	0115014 050-784	011279201 050-764
SEH-80T GX-160	0112795 050-686	0112797 050-646	0112799 050-666	0118078 050-604	0118079 050-607	0112796 050-866	0115541	0115539	0110570 050-706	0110584 050-726	0115159	0117028 050-626	0115015 050-786	0113989 050-766
SERH-50B GX160	0114184 050-692	0114003 050-650	0112799 050-666	0118079 050-607	050-604	0110568 050-870	0112818 050-750	0112861 050-810	0114209 050-712	0110584 050-726	0110863 050-846		0115016 050-792	0113989 050-766
SERH-50 GX240	0114184 050-692	0114004 050-652	0112799 050-666	0118079 050-607	050-604	0110722 050-872	0112819 050-752	0112862 050-812	0114209 050-712	0110584 050-726	0110862 050-852		0115016 050-792	0113989 050-766

\*Discontinued models – limited spare parts available.



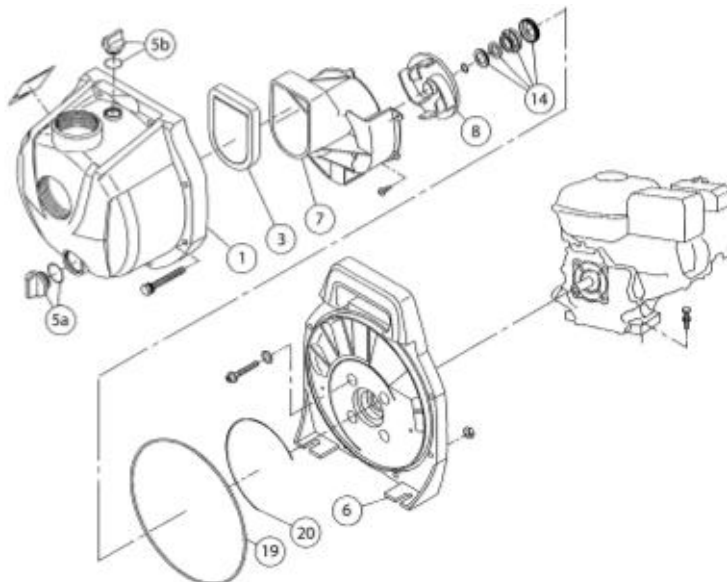
TRASH PUMP SPARES

PART -	1	2	3	5a	5b	6	7	8	9	10	14	19	20	60	61	62
MODEL	PUMP CASE	SUCTION FLANGE	CHECK VALVE	DRAIN BUNG	FILLER BUNG	FLANGE BRACKET	VOLUTE	IMPELLER	DELIVERY FLANGE	GASKET	SEAL	O RING CASE	O RING VOLUTE	FRONT COVER	DELIVERY HOUSING	HEAD PACKING
KTH-50X	0115446	0115839	0115780	0118079 050-607	0118450 050-973	N/A	0115489	0115447	0115840	0115490	0115159	0115579	0115676	0115545	0115445	0115548
KTH-80X	0115546	0111573	0115692	0118079 050-607	0118450 050-973	N/A	0115559	0115558	0115838	0110584	0115678	0115579	0115676	0115545	0115547	0115548
KTH-100X	0116150	0116268	0118261	0118079 050-607	0118450 050-973	N/A	0116488	0115626	0116188	0110750	0115678	0115579	0116270	0116490	0116148	0115548



THERMOPLASTIC PUMP SPARES

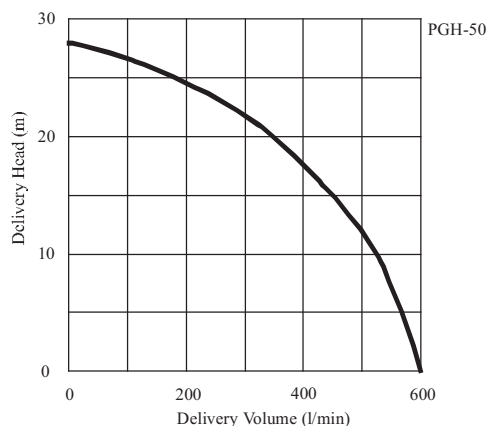
PART -	1	2	3	5a	5b	6	7	8	9	10	14	19	20	60	61	62
MODEL	PUMP CASE	SUCTION FLANGE	CHECK VALVE	DRAIN BUNG	FILLER BUNG	FLANGE BRACKET	VOLUTE	IMPELLER	DELIVERY FLANGE	GASKET	SEAL	O RING CASE	O RING VOLUTE			
PGH-50	0130024	N/A	0130009	050-604	050-604	0130002	0130003	0130004	N/A	N/A	0130011	0130005	0130008	N/A	N/A	N/A



## PETROL POWERED THERMOPLASTIC PUMPS RECOIL START C/W FULL CRASH FRAME & WHEEL KIT

Thermoplastic pumps with oil alert for salt water chemicals and fertilizers etc.

Model	Engine	Outlet	kg	W x L x H mm	Max l/min	Max Head/m	Code	Price
PGH-50	HONDA GX120	2" x 2"	22	506 x 402 x 476	600	28	050-024	



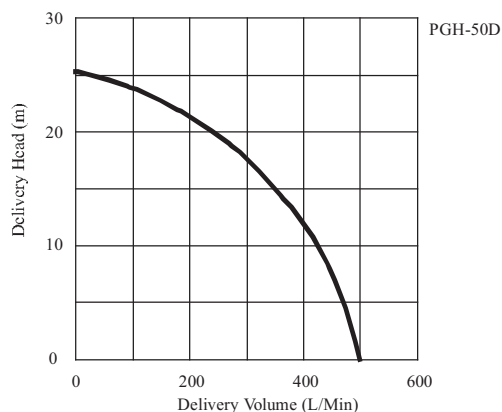
PGH-50

## DIESEL POWERED THERMOPLASTIC PUMPS RECOIL START C/W FULL CRASH FRAME & WHEEL KIT

Model	Engine	Outlet	kg	W x L x H mm	Max l/min	Max Head/m	Code	Price
PGH-50D	ROBIN DY23	2" x 2"	50	700 x 800 x 710	480	22	050-024D-DY23	
PGH-50DHR	HATZ 1B20	2" x 2"	58	700 x 800 x 710	480	22	050-024DHR	
PGH-50DYR	YANMAR L48	2" x 2"	60	700 x 800 x 710	480	22	050-024DYR	

## DIESEL POWERED THERMOPLASTIC PUMPS ELECTRIC START C/W FULL CRASH FRAME & WHEEL KIT

Model	Engine	Outlet	kg	W x L x H mm	Max l/min	Max Head/m	Code	Price
PGH-50DHES	HATZ 1B20	2" x 2"	58	700 x 800 x 710	480	22	050-024DHES	
PGH-50DYES	YANMAR L48	2" x 2"	60	700 x 800 x 710	480	22	050-024DYES	



PGH-50DHES

## HONDA PETROL POWERED DIAPHRAGM PUMPS CRASH FRAME MOUNTED

Ideal for very dirty water with solids and suitable for running on snore.  
Powered by oil alert engines and mounted in full crash frames. Optional trolley available.

Model	Engine	Outlet	kg	WxLxH mm	Max l/min	Max Head/m	Code	Price
SMD50HX	GX120	2"	37.5	614x370x510	126	17	060-820	
SMD80HX	GX160	3"	45	660x420x540	250	18	060-822	

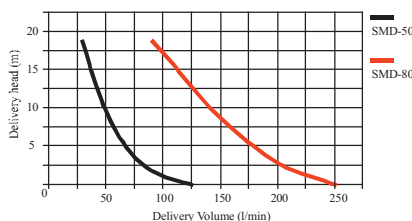
## HONDA PETROL POWERED DIAPHRAGM PUMPS TROLLEY MOUNTED

Ideal for very dirty water with solids and suitable for running on snore.  
Powered by oil alert engines and mounted in full crash frames.

Model	Engine	Outlet	kg	WxLxH mm	Max l/min	Max Head/m	Code	Price
SMD50HT	GX120	2"	44	700x420x540	126	17	060-820WK	
SMD80HT	GX160	3"	60	700x420x540	250	18	060-822WK	



SMD50X IN CRASH FRAME



SMD50HT TROLLEY MOUNTED

## ELECTRIC DIAPHRAGM PUMPS

Ideal for very dirty water with solids and suitable for dry running.  
Electric drive via gearbox for ease of operation and simple control by means of panel and floats.

Model	Motor	Outlet	kg	WxLxH mm	Max l/min	Max Head/m	Code	Price
DP2E 230v	2hp 230v	2"	62	700 x 850 x 600	125	16	060-847	
DP2E 110v	2hp 110v	2"	62	700 x 850 x 600	125	16	060-848	
DP2E 415v	2hp 415v	2"	62	700 x 850 x 600	125	16	060-849	
DP3E 230v	2hp 230v	3"	65	700 x 850 x 600	250	18	060-846	
DP3E 110v	2hp 110v	3"	65	700 x 850 x 600	250	18	060-842	
DP3E 415v	2hp 415v	3"	65	700 x 850 x 600	250	18	060-844	



DP2E



DP3E  
shown without cover fitted



## DIESEL POWERED DIAPHRAGM PUMPS RECOIL START

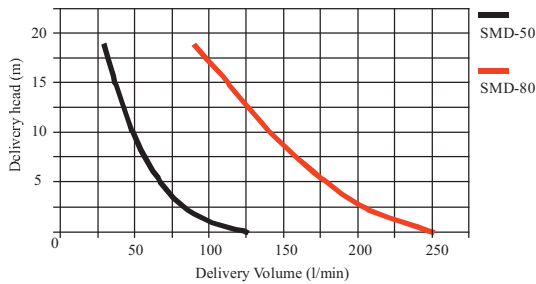
Ideal for very dirty water with solids and suitable for running on snore.  
Powered by Hatz or Yanmar engines and wheeled chassis mounted.

Model	Engine	Outlet	kg	WxLxH mm	Max l/min	Max Head/m	Code	Price
DP2YR	Yanmar L48	2"	72	770 x 1000 x 600	126	17	060-812	
DP2HR	Hatz 1B20	2"	72	770 x 1000 x 600	126	17	060-813	
DP3YR	Yanmar L48	3"	76	770 x 1000 x 600	250	18	060-818	
DP3HR	Hatz 1B20	3"	76	770 x 1000 x 600	250	18	060-824	

## DIESEL POWERED DIAPHRAGM PUMPS ELECTRIC START

Ideal for very dirty water with solids and suitable for running on snore.  
Powered by Hatz or Yanmar engines and wheeled chassis mounted.

Model	Engine	Outlet	kg	WxLxH mm	Max l/min	Max Head/m	Code	Price
DP2YE	Yanmar L48	2"	73	770 x 1000 x 600	126	17	060-815	
DP2HE	Hatz 1B20	2"	73	770 x 1000 x 600	126	17	060-827	
DP3YE	Yanmar L48	3"	83	770 x 1000 x 600	250	18	060-816	
DP3HE	Hatz 1B20	3"	83	770 x 1000 x 600	250	18	060-828	



DP3YE



DP2HR

**10 BAR RUBBER WATER SUCTION/DELIVERY HOSE ASSEMBLIES**  
**WIRE ARMoured HOSES CW COUPLINGS**

SIZE	LENGTH	Kg	WORKING BAR	CODE	PRICE
3"	6 metres	25	10	030-470	
4"	6 metres	34	10	030-475	
6"	3 metres	34	10	030-480	
8"	3 metres	62	10	030-485	

Interchangeable lever-lock couplings



**NEW**

LONCIN PETROL



G160



G240



Parallel key way



Generator shaft

Loncin general purpose replacement engines, see pages 134-136 for more information

CHANGFA DIESEL



CF170  
Recoil Start



CF170E  
Electric Start with Charging Circuit

Changfa Diesel replacement engines, see page 137 for more information

## DIESEL ENGINE POWERED DIESEL TRANSFER PUMPS RECOIL START C/W FULL CRASH FRAME & WHEEL KIT

MODEL	ENGINE	PORT	KG	H x W x L	MAX l/min	MAX Head/m	CODE	PRICE
RED B2KQA YR	YanmarL48	2"x2"	50	820 x 700 x 1030	420	20	070-200YR	
RED B2KQA HR	Hatz1B20	2"x2"	50	820 x 700 x 1030	420	20	070-200HR	
RED B3KQA YR	YanmarL70	3"x3"	60	820 x 700 x 1030	870	17	070-300YR	
RED B3KQA HR	Hatz1B30	3"x3"	60	820 x 700 x 1030	870	17	070-300HR	

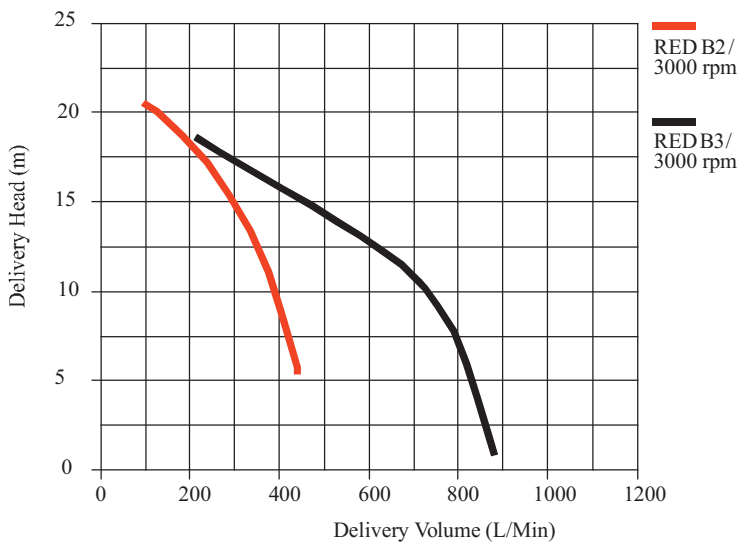
## DIESEL ENGINE POWERED DIESEL TRANSFER PUMPS ELECTRIC START C/W FULL CRASH FRAME & WHEEL KIT

MODEL	ENGINE	PORT	KG	H x W x L	MAX l/min	MAX Head/m	CODE	PRICE
RED B2KQA YE	YanmarL48	2"x2"	50	820 x 700 x 1030	420	20	070-200YE	
RED B2KQA HE	Hatz1B20	2"x2"	50	820 x 700 x 1030	420	20	070-200HE	
RED B3KQA YE	YanmarL70	3"x3"	60	820 x 700 x 1030	870	17	070-300YE	
RED B3KQA HE	Hatz1B30	3"x3"	60	820 x 700 x 1030	870	17	070-300HE	

Heavy duty diesel powered diesel transfer pump in full crash frame. Complete with spark arrestor. Viton seals and o rings. Allow build time of approx. 2-3 days.



RED B2KQA YR



LC SERIES



LONCIN LC2500 DC Generator



LONCIN LC6500 DDC Generator  
shown with wheel kit

LC series, see page 133 for more information

EN SERIES PETROL GENERATORS



LONCIN EN3500 Generator



LONCIN EN2500 Generator

EN series, see page 131 for more information

CHANGFA DIESEL GENERATORS



CED6500XE



CED4000XE

Changfa diesel engine generators, see page 132 for more information