



Flygt 3057.091/181

Table of Contents

Introduction	2
Purpose of this manual.....	2
Disclaimer.....	2
Data for ordering spare parts.....	2
Specially approved products.....	2
Qualification of personnel.....	2
Dimensional accuracy inspection.....	2
Product Description	3
The data plate.....	3
Approvals.....	4
Product approvals for hazardous locations.....	4
EN approval plate.....	4
IEC approval plate.....	4
FM approval plate.....	5
Product denomination.....	5
Drive and Hydraulic Units	7
CP.....	7
CS.....	9
CF.....	11
DP.....	13
DS.....	15
DF.....	19
List of parts, drive unit.....	23
List of parts, hydraulic unit.....	28
Installation Components	30
CP/DP.....	30
CP/DP.....	31
CP/DP.....	32
CF/CS/DF/DS.....	33
CF/CS/DF/DS.....	34
List of parts.....	35
Service Parts	37
List of parts.....	37

Introduction

Purpose of this manual

The purpose of this manual is to provide necessary information on spare parts and accessories order.

Disclaimer

Always use genuine Flygt parts. The use of other spare parts or accessories can invalidate any claims for warranty or compensation. Xylem does not take any responsibility for damages that are caused by the use of non-original parts. For more information, contact your local sales and service representative.

Data for ordering spare parts

The following information is needed for spare part orders:

- Serial number of the product
- Part number
- Quantity of bulk material, see * in tables

Specially approved products

Qualification of personnel

Only Xylem or Xylem-authorized service personnel may undertake repair work on Ex-approved products.

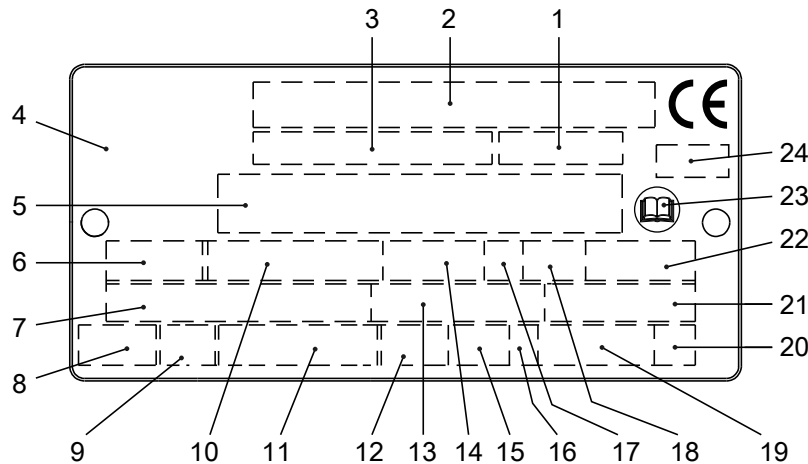
Dimensional accuracy inspection

Spare parts marked with (Ex) after the part number are subject to dimensional accuracy inspection.

Product Description

The data plate

The data plate is a metal label that is located on the main body of the products. The data plate lists key product specifications. Specially approved products also have an approval plate.




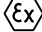
WS006257A

1. Curve code or Propeller code
2. Serial number, see [Product denomination](#) (page 5)
3. Product number
4. Country of origin
5. Additional information
6. Phase; type of current; frequency
7. Rated voltage
- 8.
9. Thermal protection
10. Thermal class
11. Rated shaft power
12. International standard
13. Degree of protection
14. Rated current
15. Rated speed
16. Maximum submergence
17. Direction of rotation: L=left, R=right
18. Duty class
19. Duty factor
20. Product weight
21. Locked rotor code letter
22. Power factor
23. Maximum ambient temperature
24. Read installation manual
25. Notified body, only for EN-approved Ex products

Figure 1: The data plate

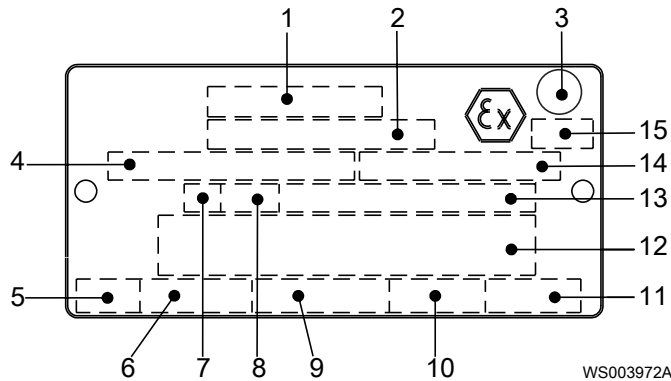
Approvals

Product approvals for hazardous locations

Pump	Approval
3057.091 <ul style="list-style-type: none"> • 3068.090 • 3068.590 • 3068.890 	European Norm (EN) <ul style="list-style-type: none"> • ATEX Directive • EN 60079-0, EN 60079-1, EN 1127-1 •  II 2 G Ex d IIB T4
	EN approval for cable entry: <ul style="list-style-type: none"> • Certificate number: INERIS 02ATEX9008 U •  II 2 G Ex d IIC or I M2 Ex d I
	FM (FM Approvals) <ul style="list-style-type: none"> • Explosionproof for use in Class I, Div. 1, Group C and D • Dust ignition proof for use in Class II, Div. 1, Group E, F and G • Suitable for use in Class III, Div. 1, Hazardous Locations

EN approval plate

This illustration describes the EN approval plate and the information that is contained in its fields.

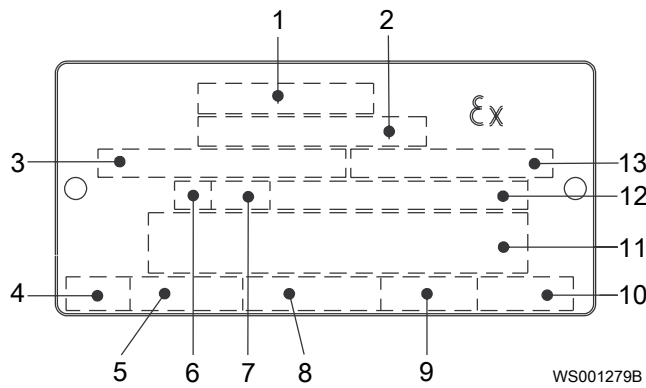


1. Approval
2. Approval authority and Approval number
3. Approval for Class I
4. Approved for drive unit
5. Stall time
6. Starting current or Rated current
7. Duty class
8. Duty factor
9. Input power
10. Rated speed
11. Controller
12. Additional information
13. Maximum ambient temperature
14. Serial number
15. ATEX marking

IEC approval plate

This illustration describes the IEC approval plate and the information that is contained in its fields.

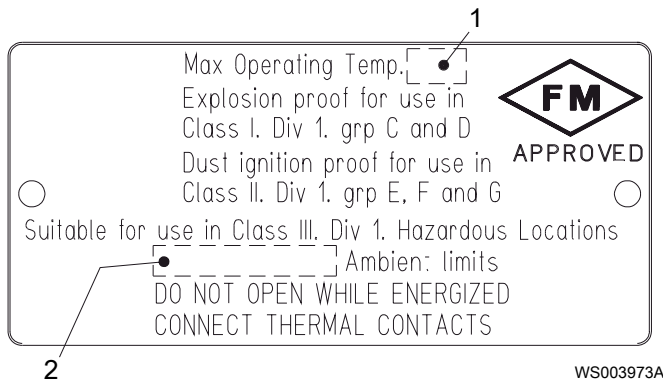
International Norm; not for EU member countries.



1. Approval
2. Approval authority and Approval number
3. Approved for drive unit
4. Stall time
5. Starting current or Rated current
6. Duty class
7. Duty factor
8. Input power
9. Rated speed
10. Controller
11. Additional information
12. Maximum ambient temperature
13. Serial number

FM approval plate

This illustration describes the FM approval plate and the information that is contained in its fields.



1. Temperature class
2. Maximum ambient temperature

Product denomination

Reading instruction

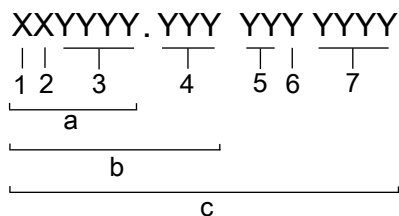
In this section, code characters are illustrated accordingly:

X = letter

Y = digit

The different types of codes are marked up with a, b and c. Code parameters are marked up with numbers.

Codes and parameters

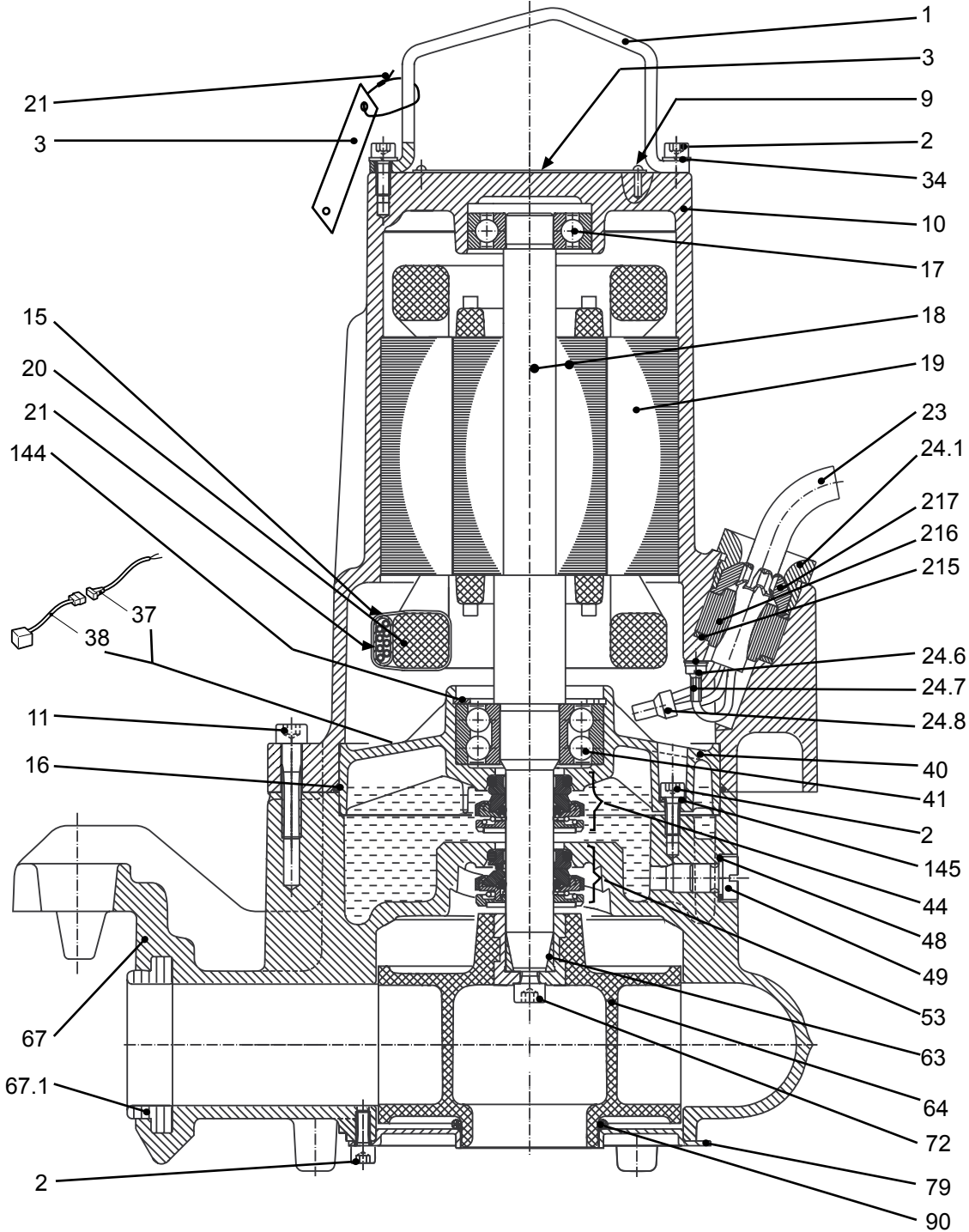


Type of Callout	Number	Indication
Type of code	a	Sales denomination
	b	Product code
	c	Serial number
Parameter	1	Hydraulic end
	2	Type of installation
	3	Sales code
	4	Version
	5	Production year
	6	Production cycle
	7	Running number

Drive and Hydraulic Units

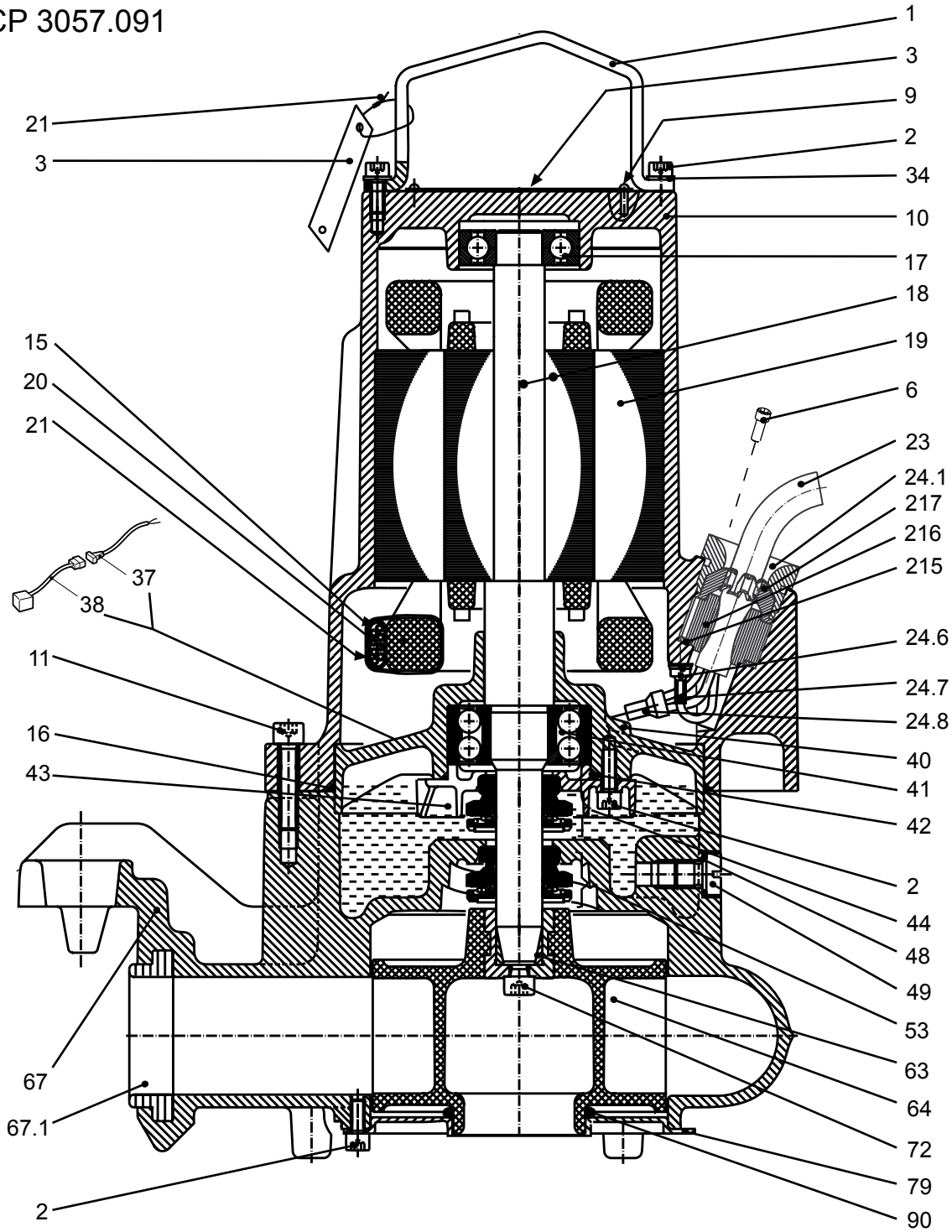
CP

CP 3057.181



30662

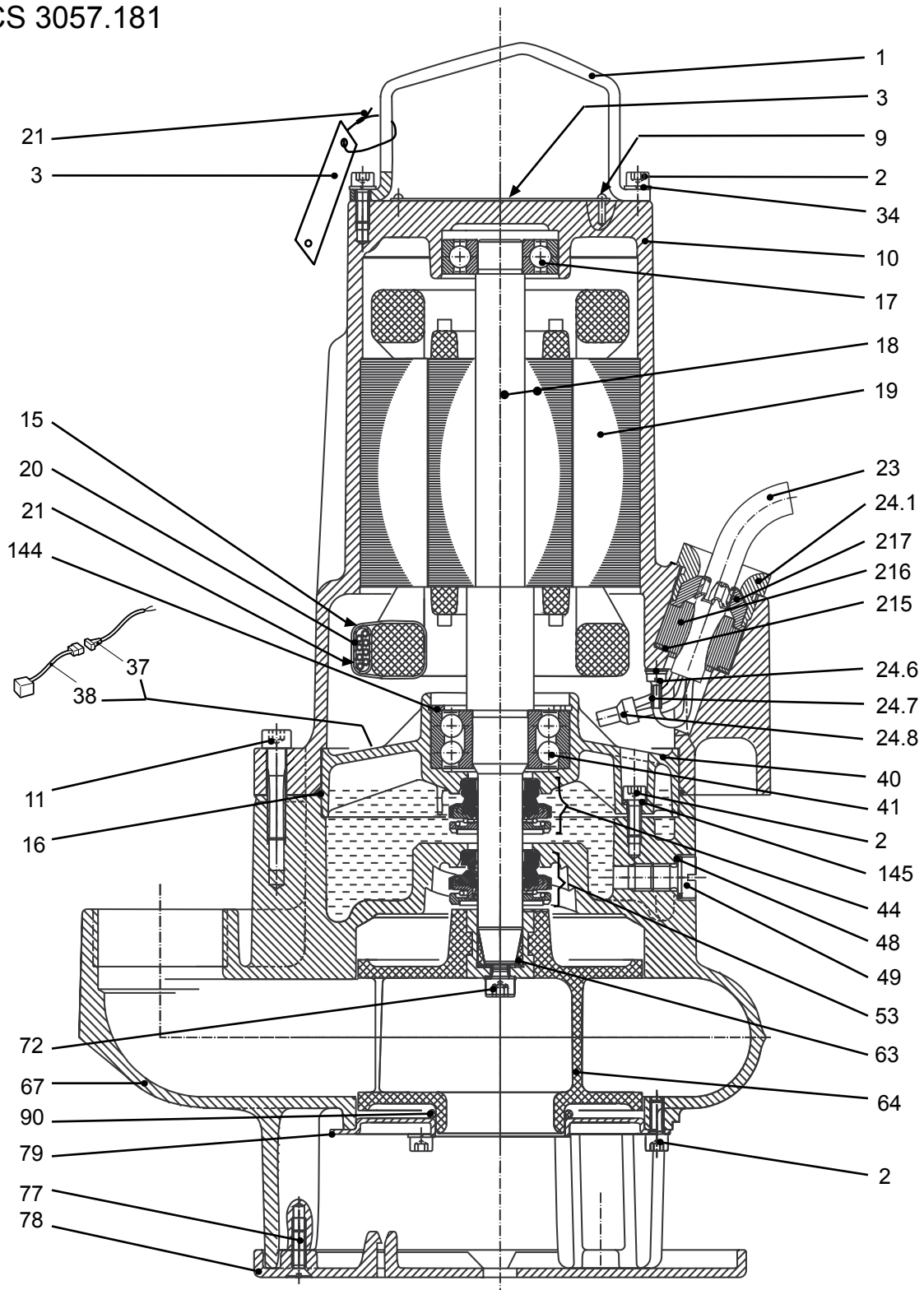
CP 3057.091



30835

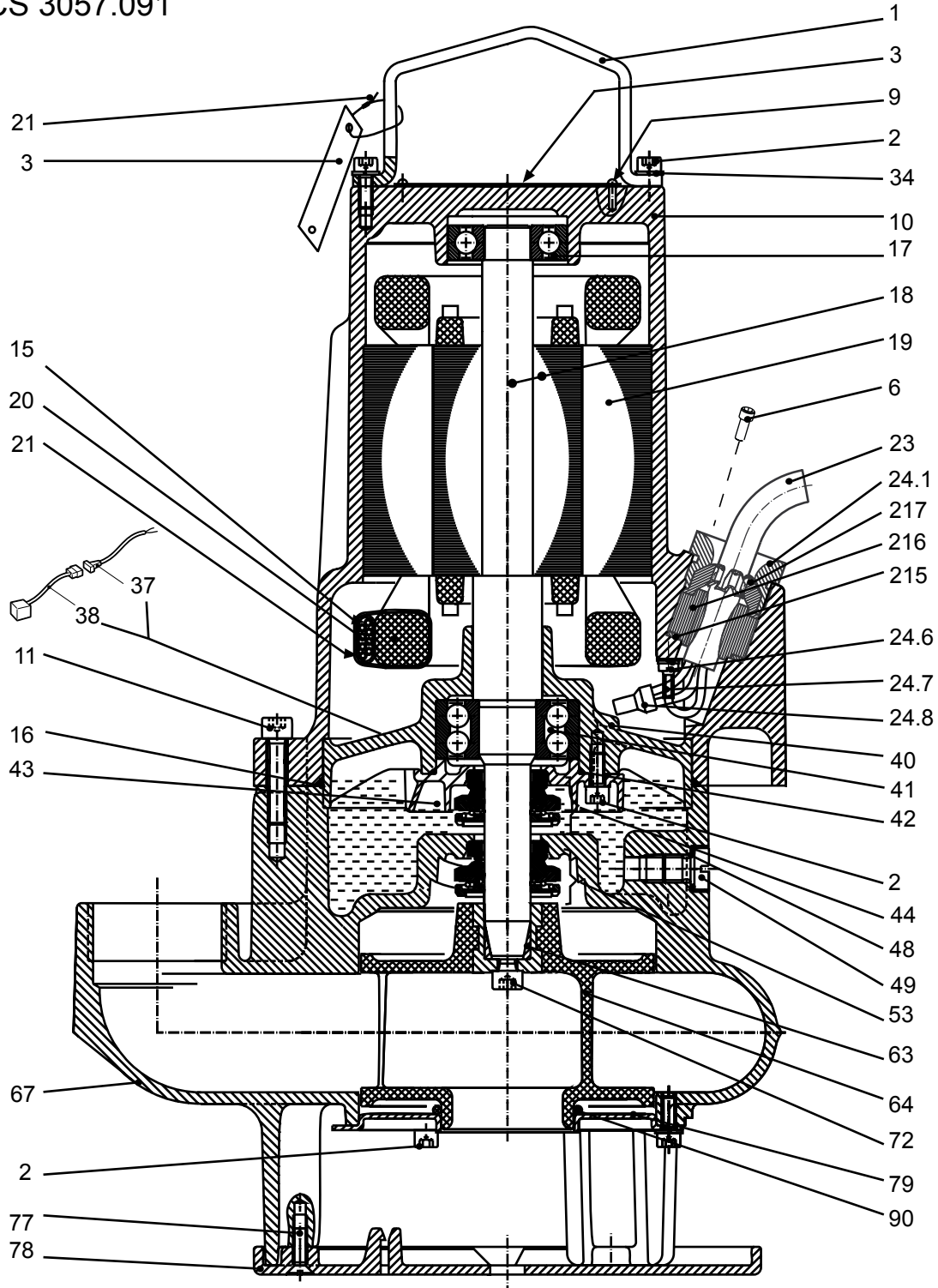
CS

CS 3057.181



30664

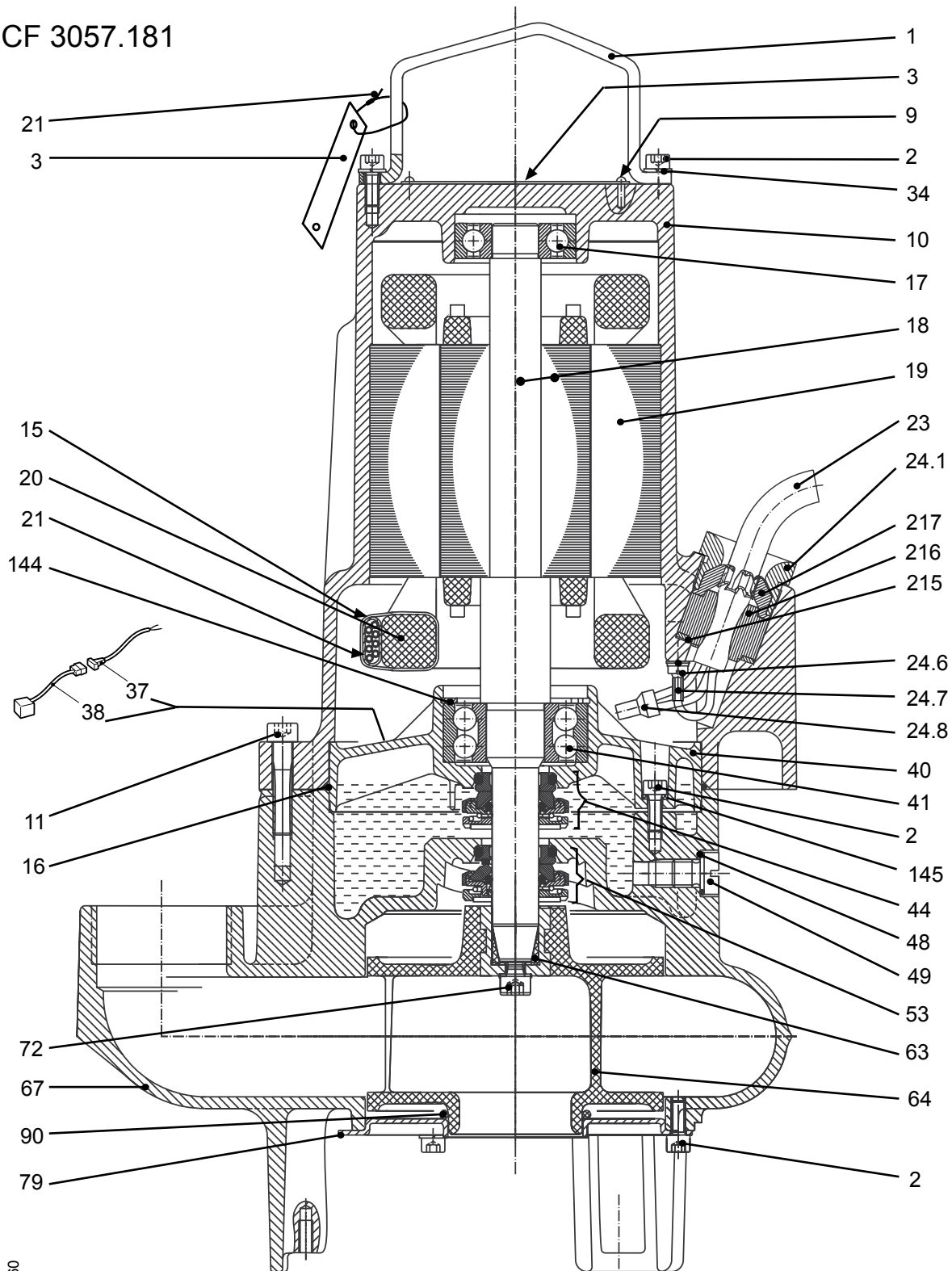
CS 3057.091



30839

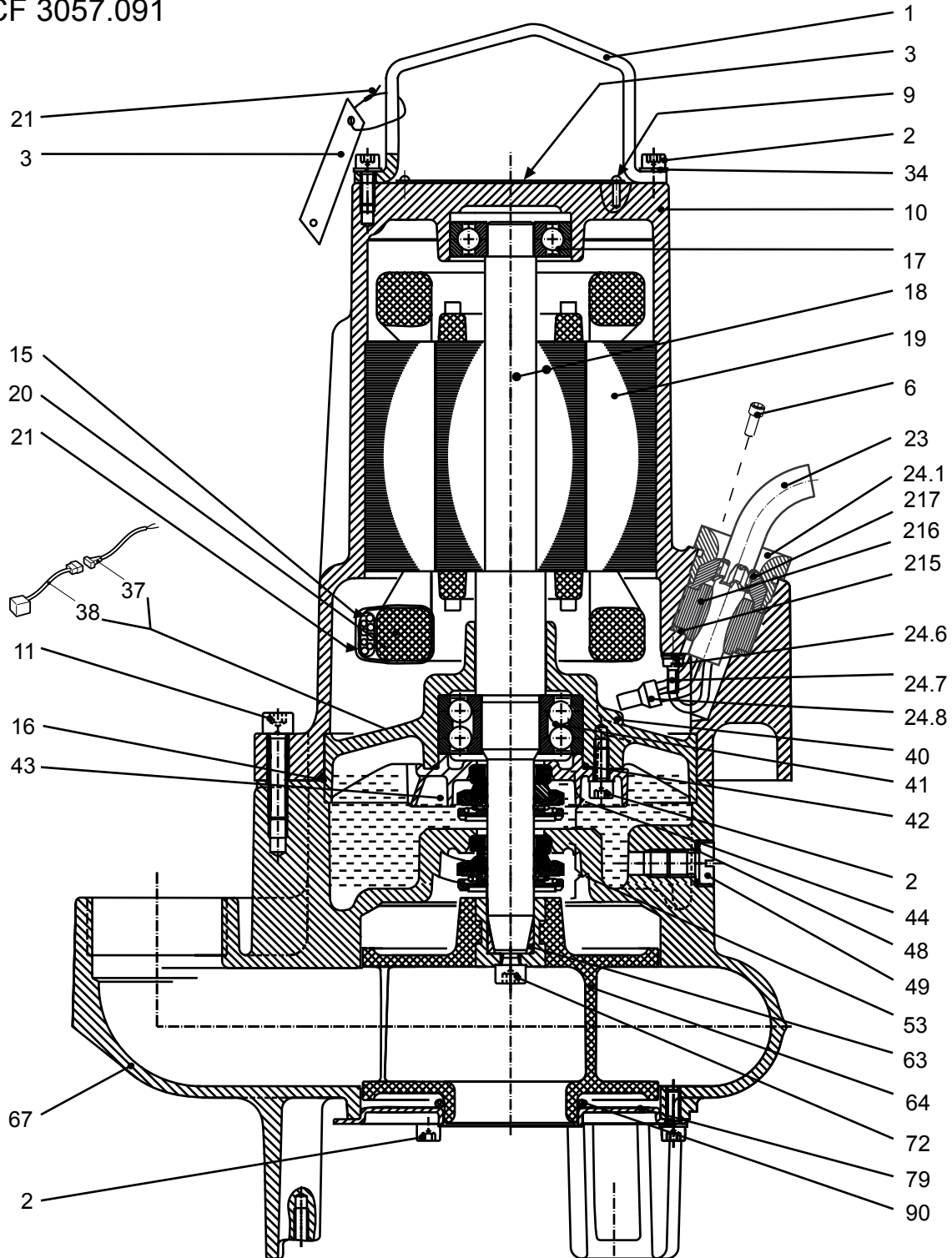
CF

CF 3057.181



30660

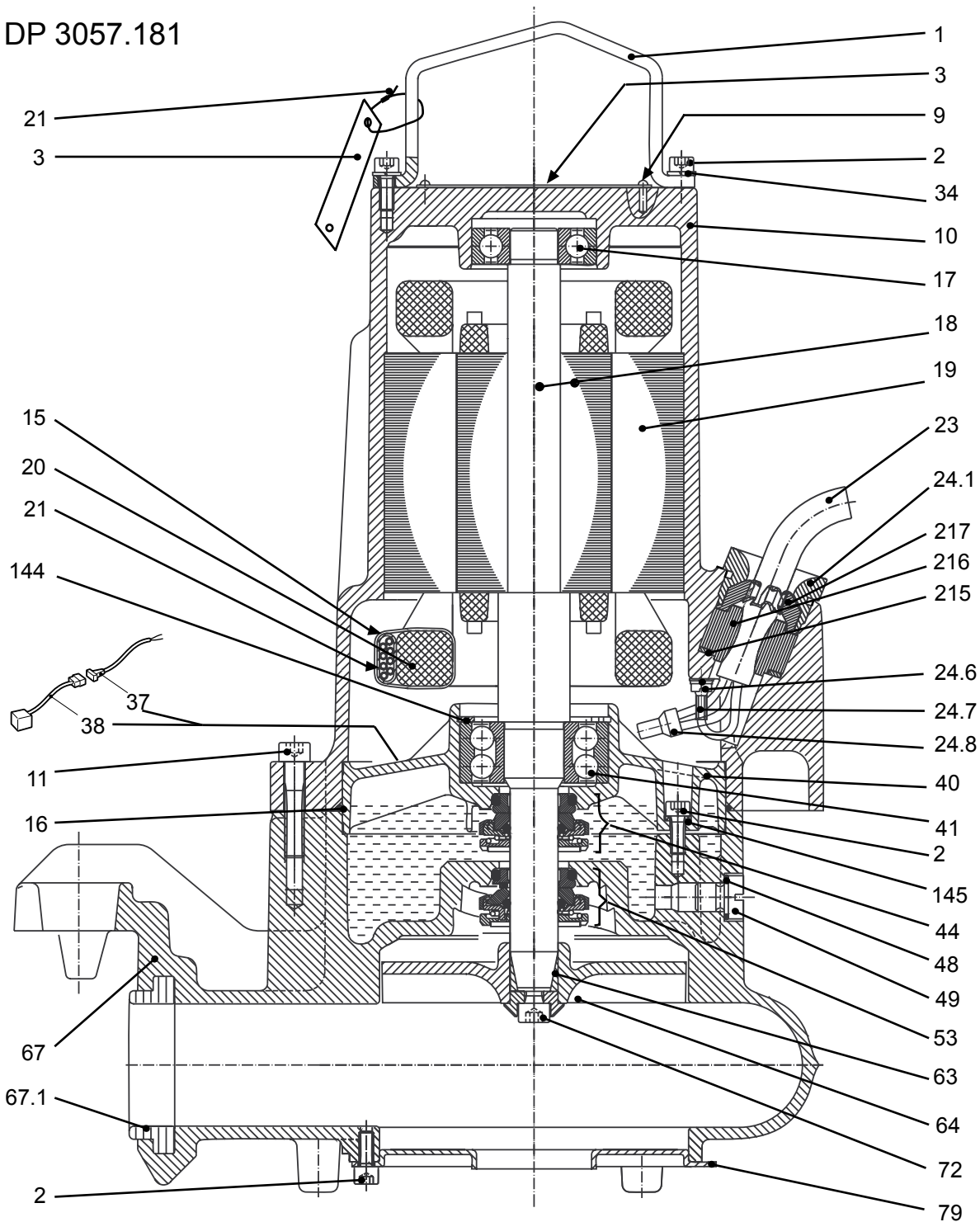
CF 3057.091



30837

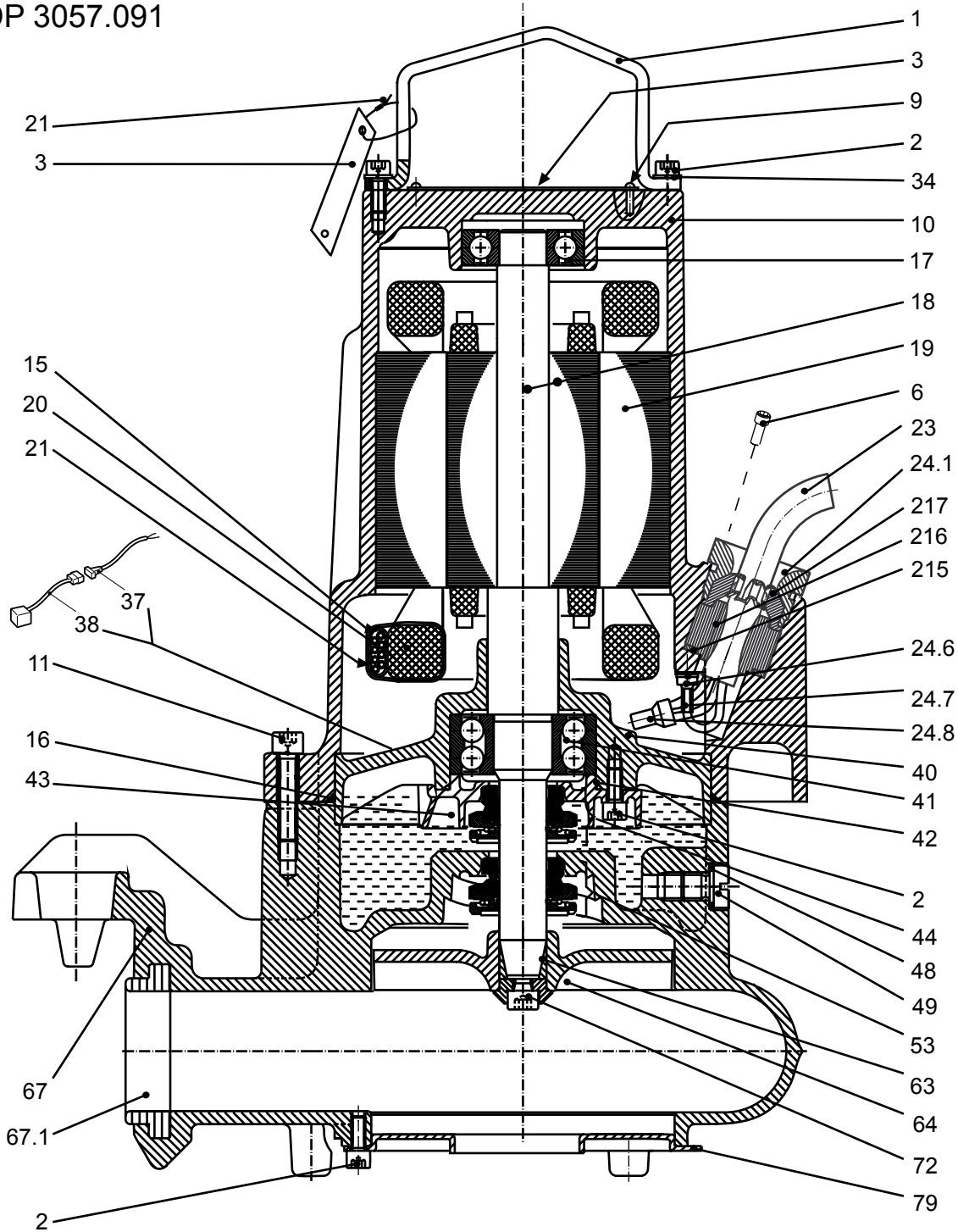
DP

DP 3057.181



30663

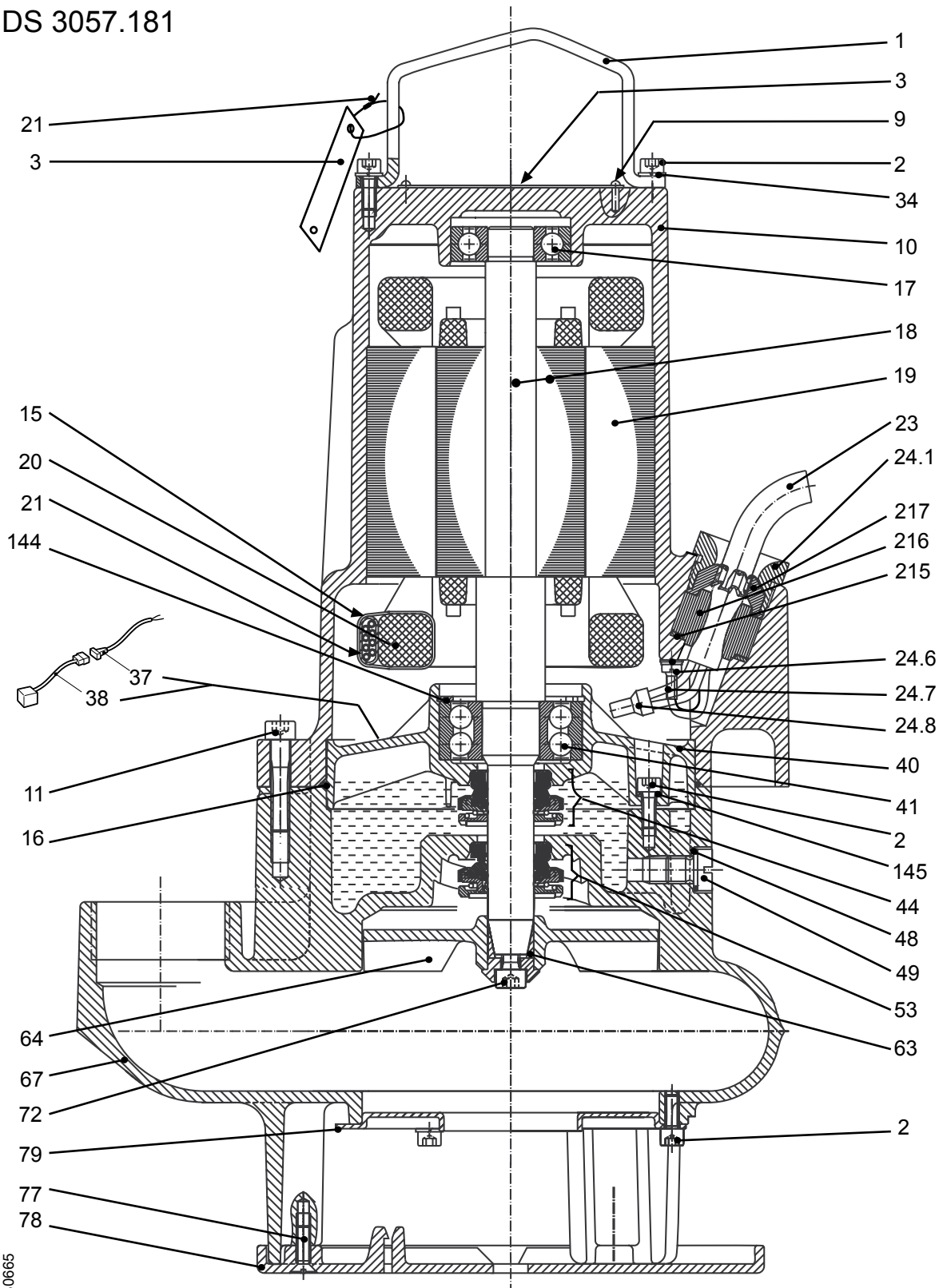
DP 3057.091



30836

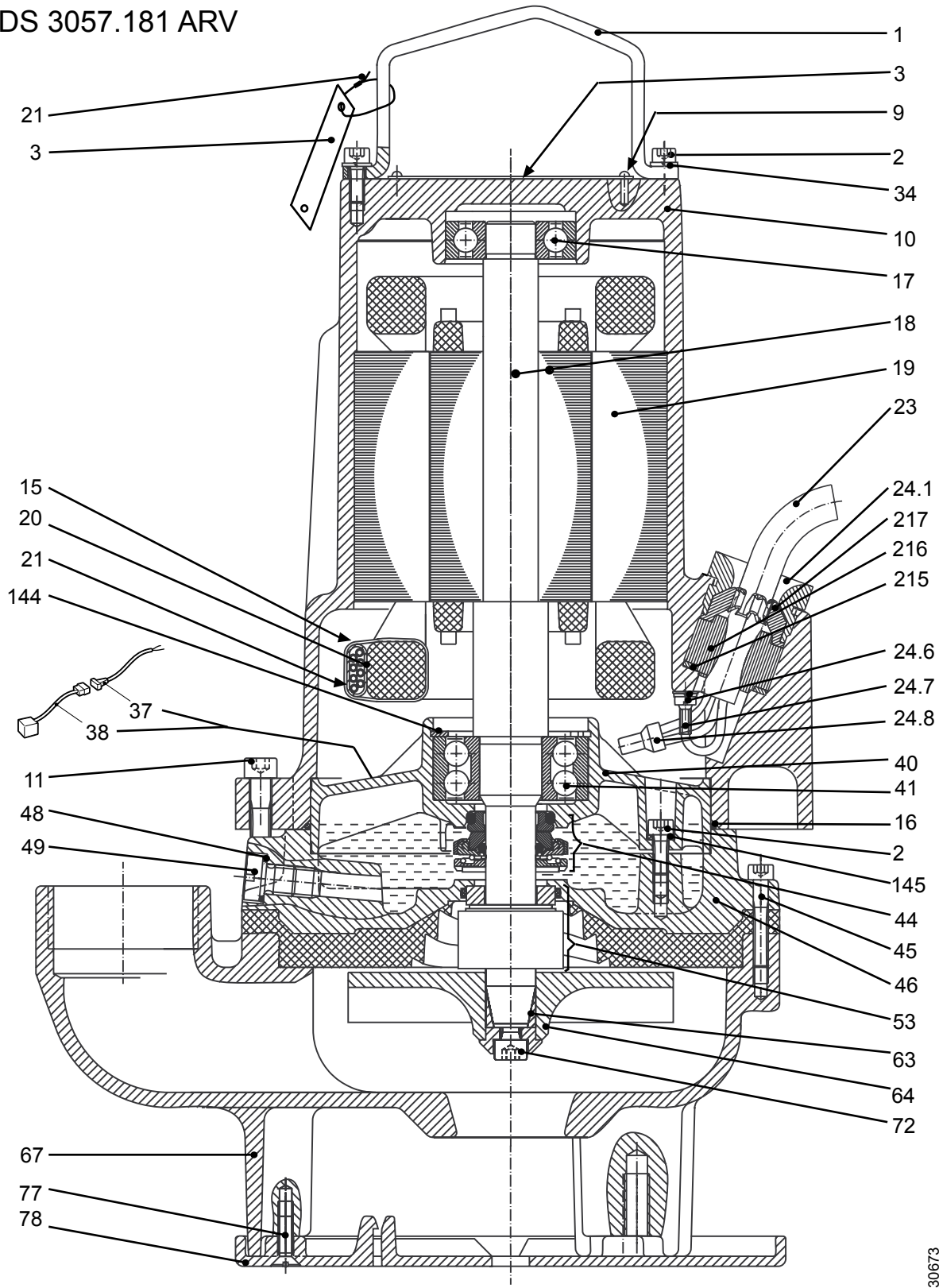
DS

DS 3057.181



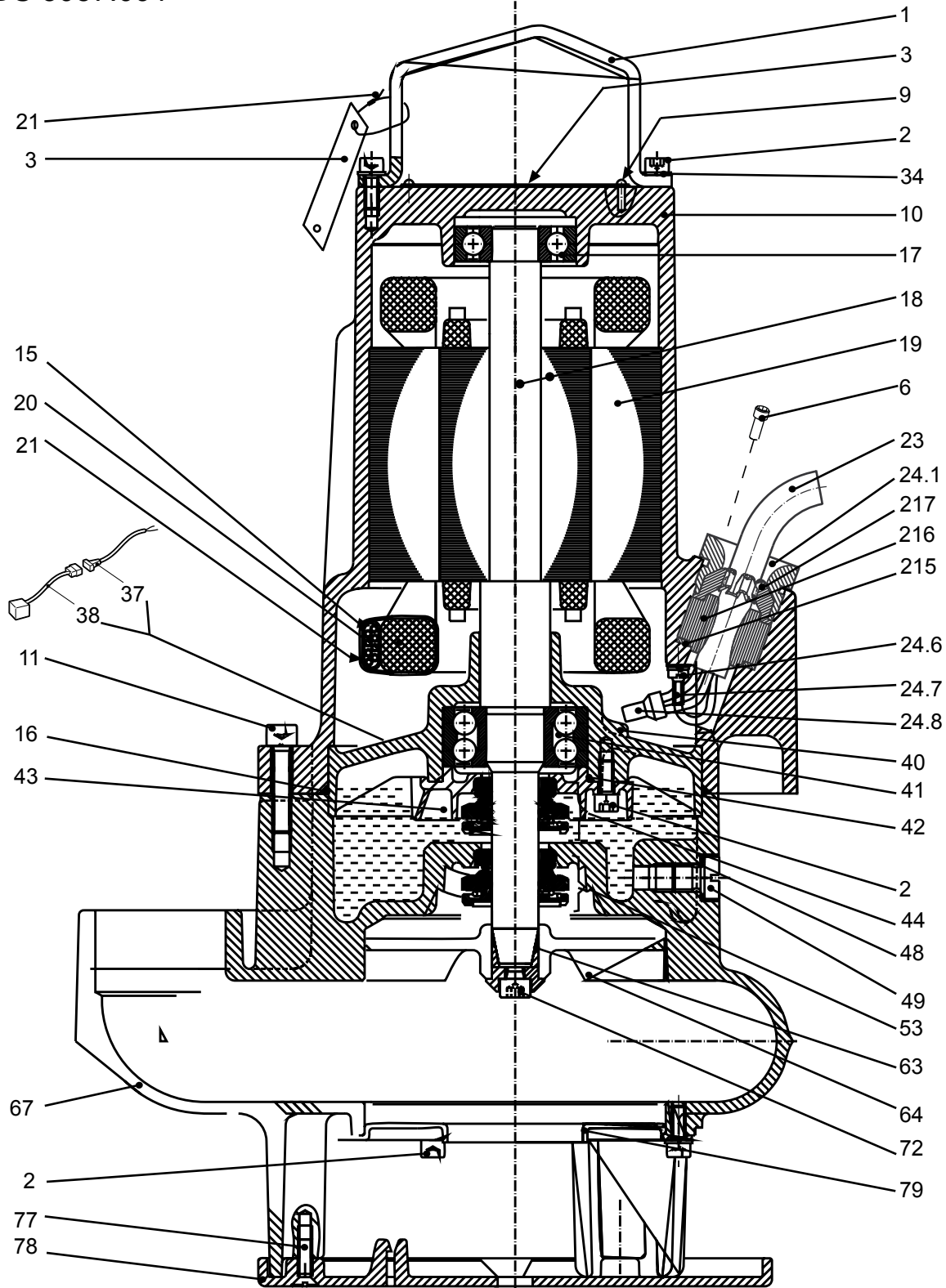
30665

DS 3057.181 ARV



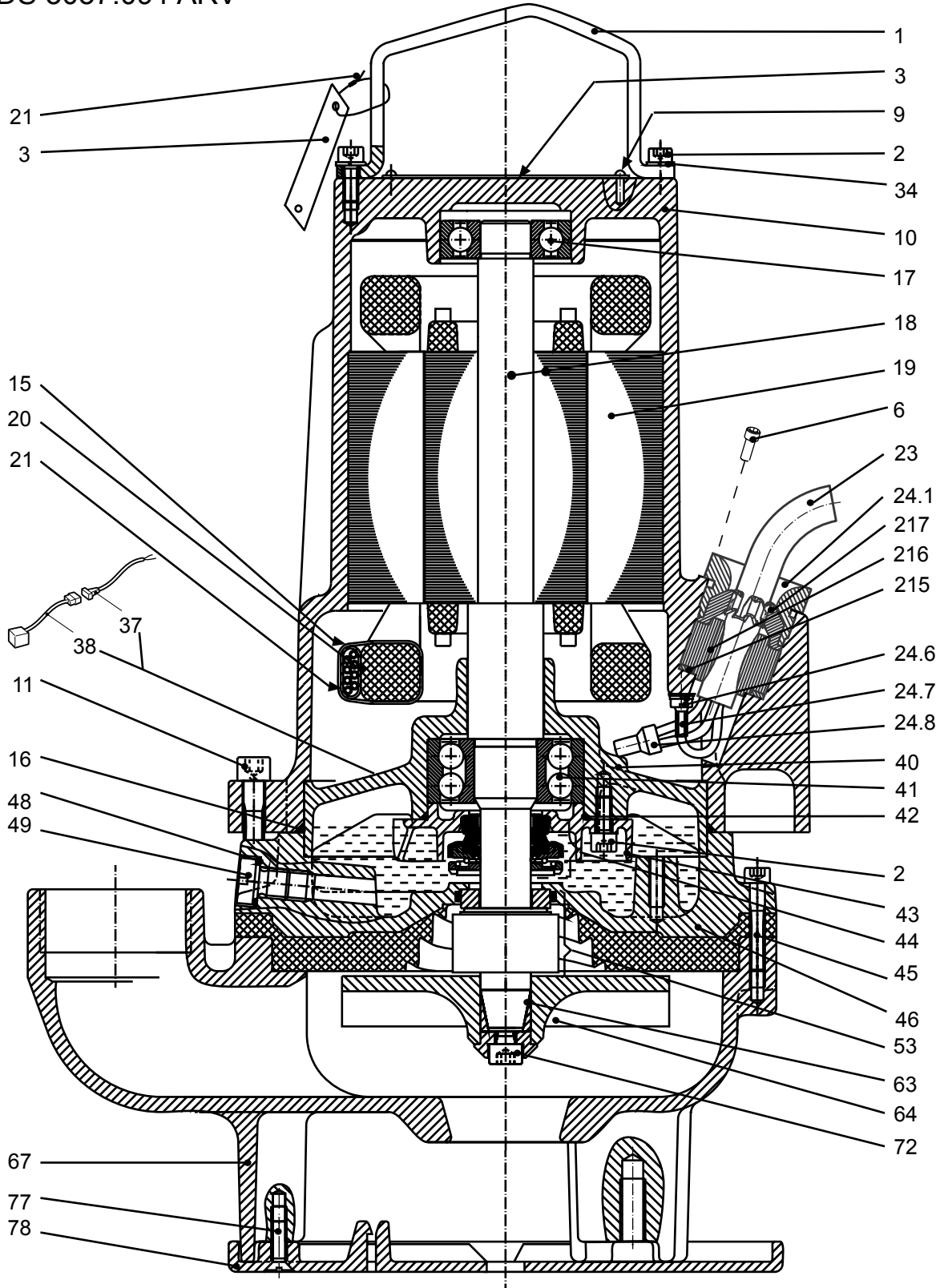
30673

DS 3057.091



30840

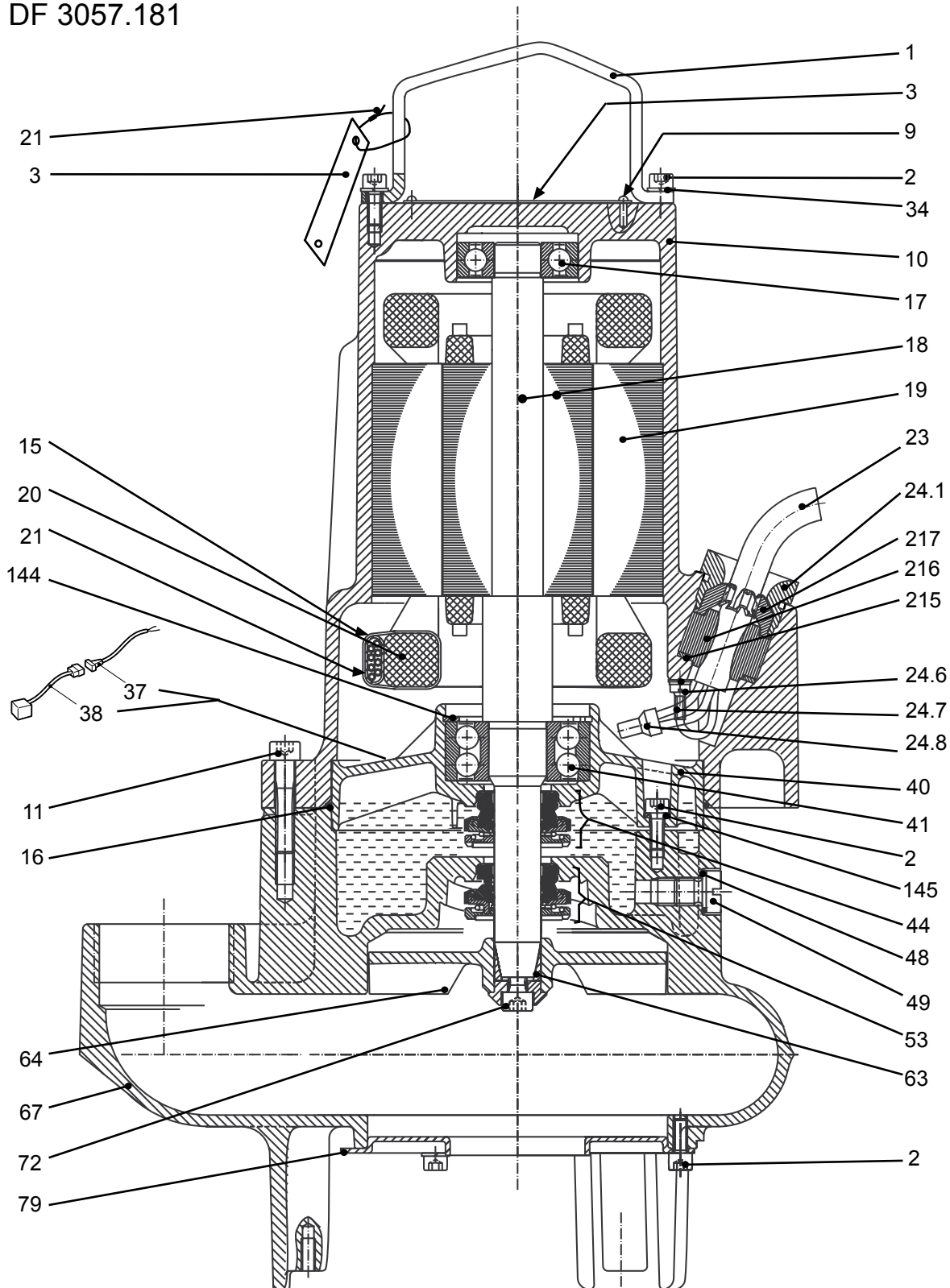
DS 3057.091 ARV



30842

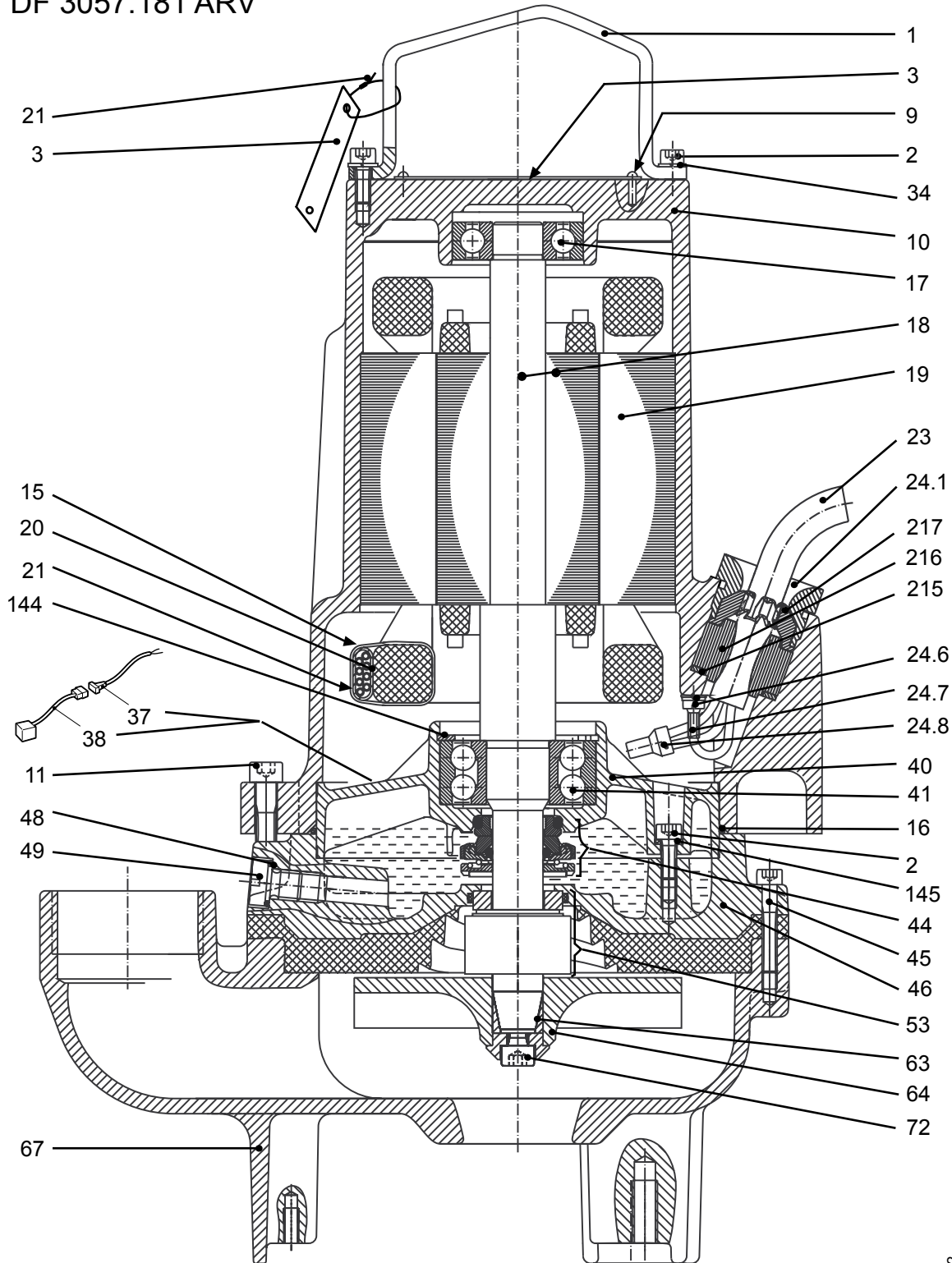
DF

DF 3057.181



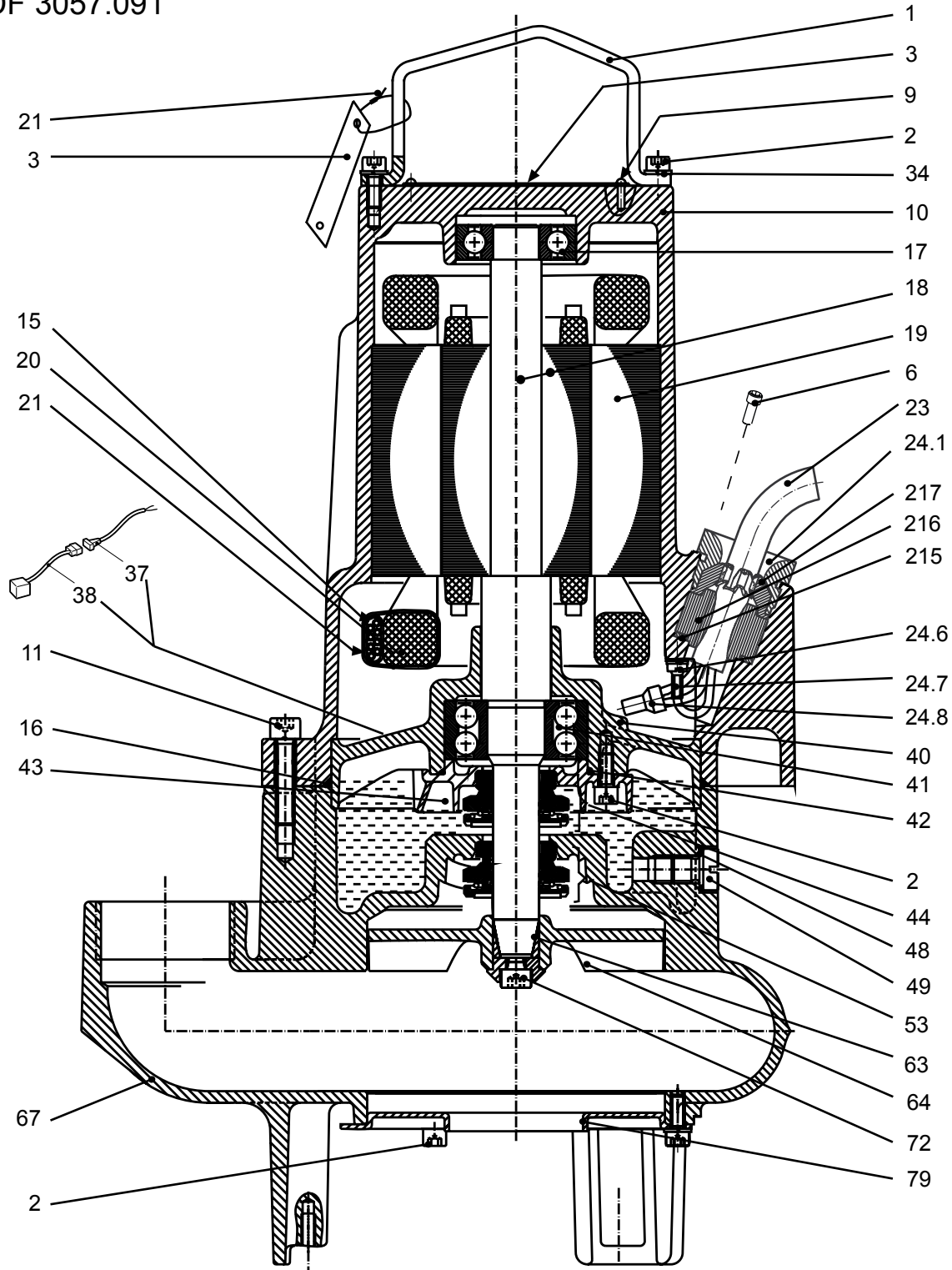
30661

DF 3057.181 ARV



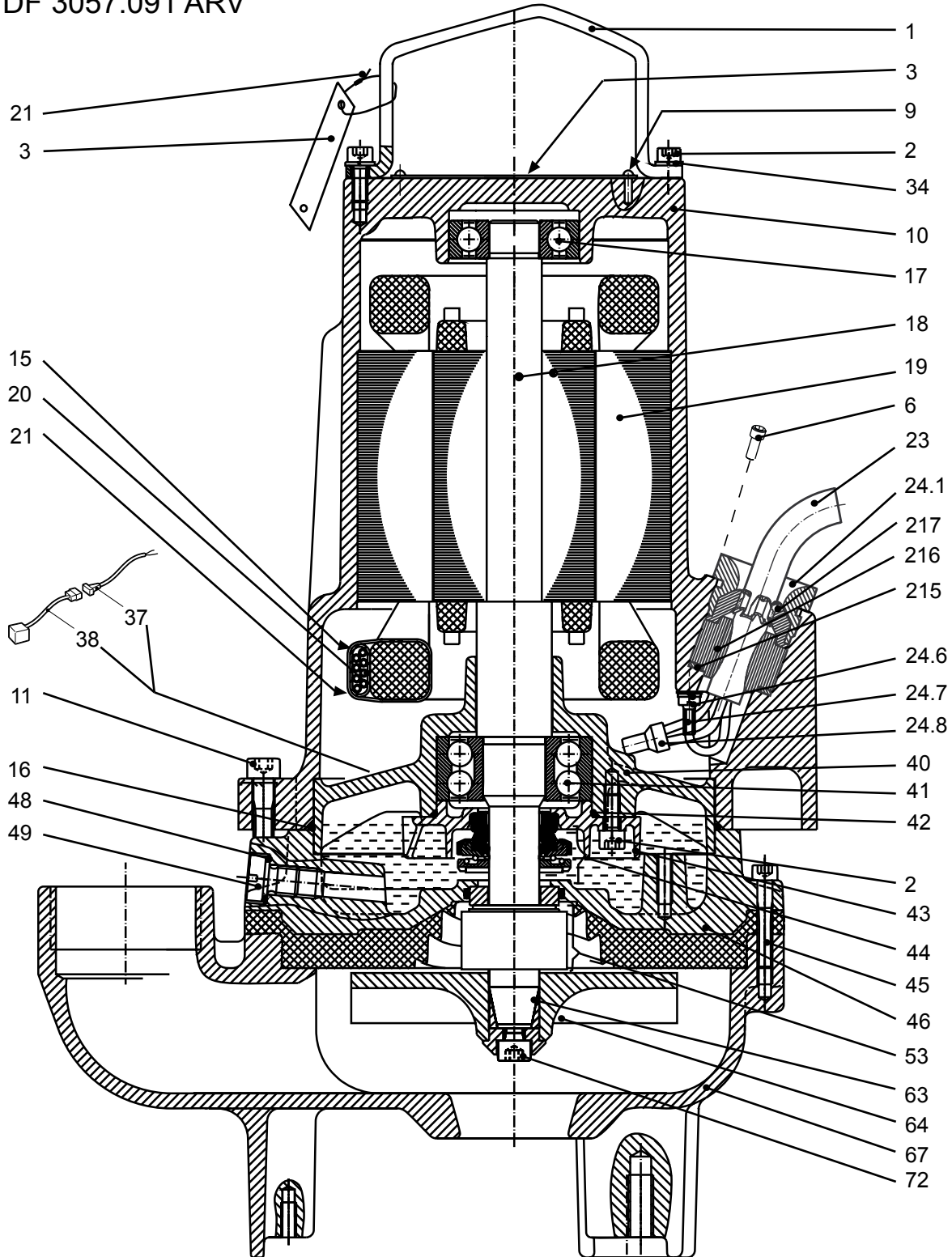
30672

DF 3057.091



30838

DF 3057.091 ARV



30841

List of parts, drive unit

Pos. No	Part. No	Denomination	Qty/Version	
			091	181
1	555 61 01	Lifting handle V2A	1	1
2	82 00 13	Hex.socket hd screw M6X16-A2-70	8	8
3	630 68 00	Data plate USE 6306801 AS SPARE PART	2	2
5	543 42 00	Instruction plate		1
5	594 43 00	Instruction plate		2
5	604 32 01	Sticker		1
5	761 78 00	Name plate		1
6	83 02 73	Hex.socket hd screw M6X12-A4-70	1	
9	82 20 88	Drive screw 4X5-A2/A4	6	8
10	722 53 01	Stator housing	1	
10	722 53 00	Stator housing		1
10	722 53 02 (Ex)	Stator housing		1
11	83 04 45	Hex.socket hd screw M8X35-A4-80	3	3
12,1	82 70 85	Cap 5X10 MM PVC	1	1
12,2	83 42 62	Closed end splice 0.33-0.82(AWG 22-18) L=18	2	
12,3	94 10 82	Insulating hose pvc		*
12,3	94 10 83	Insulating hose pvc		*
12,4	94 02 61	Tape		*
12,2	83 44 24	Closed end splice 3-6(AWG 12-10) L=18	2	2
13	630 76 00	Plate HOT WATER PRODUCT	1	1
14	630 69 00	Certificate plate EX	1	
14	630 69 01 (Ex)	Certificate plate IECEX PLATE	1	
14	630 70 00	Certificate plate FM	1	
15	427 13 00	Marking tape 8129 HIGH TACK/---	1	1
15	772 17 00	Connection plate	1	1
16	82 71 43	O-ring 156X3 FPM	1	1
17	83 33 13	Ball bearing 6304-2Z/C3WT 20X52X15	1	1
18	645 59 00 (Ex)	Shaft unit 2-POL 3-PHASE 80 MM	1	
			Stator 3-phase 50Hz 2-poles 380V-400V Y 220V-230V D P2=1,7kW Max ambient temp=40 DC Thermal contact 125 DC . Stator 3-phase 50Hz 2-poles 380V-400V Y 220V-230V D P1=1,7KW Max ambient temp=70 DC Thermal contact 125 DC . Stator 3-phase 60Hz 2-poles 460V-480V Y P2=2kW/2,7hp Max ambient temp=40 DC Thermal contact 125 DC	

Pos. No	Part. No	Denomination	Qty/Version		
			091	181	
18	645 59 01 (Ex)	Shaft unit 2-POL 1-PHASE 100 MM	Stator 1-phase 60Hz 2-poles 230V-240V P2=1,7kW/2,3hp Max ambient temp=40 DC Thermal contact 125 DC	1	
18	645 59 02 (Ex)	Shaft unit 3-PHASE 2-POL 100 MM	Stator 3-phase 50Hz 2-poles 380V-400V Y 220V-230V D P2=2,4kW Max ambient temp=40 DC Thermal contact 125 DC . Stator 3-phase 60Hz 2-poles 460V-480V Y P1=2,8KW Max ambient temp=70 DC Thermal contact 125 DC . Stator 3-phase 50Hz 2-poles 380V-400V Y 220V-230V D P1=2,4KW Max ambient temp=70 DC Thermal contact 125 DC . Stator 3-phase 60Hz 2-poles 460V-480V Y P2=2,8kW/3,8hp Max ambient temp=40 DC Thermal contact 125 DC	1	
18	645 59 03	Shaft unit 3-PHASE 2-POL 100 MM	Stator 3-phase 50Hz 2-poles 380V-400V Y 220V-230V D P2=2,4kW Max ambient temp=40 DC Thermal contact 125 DC . Stator 3-phase 60Hz 2-poles 460V-480V Y P1=2,8KW Max ambient temp=70 DC Thermal contact 125 DC . Stator 3-phase 50Hz 2-poles 380V-400V Y 220V-230V D P1=2,4KW Max ambient temp=70 DC Thermal contact 125 DC . Stator 3-phase 60Hz 2-poles 460V-480V Y P2=2,8kW/3,8hp Max ambient temp=40 DC Thermal contact 125 DC	1	
18	645 59 00 (Ex)	Shaft unit 2-POL 3-PHASE 80 MM	Motor 13-08-2BB		1
18	645 59 01 (Ex)	Shaft unit 2-POL 1-PHASE 100 MM	Motor 13-10-2BZ		1
18	645 59 02 (Ex)	Shaft unit 3-PHASE 2-POL 100 MM	Motor 13-10-2BB		1
18	645 59 03	Shaft unit 3-PHASE 2-POL 100 MM	Motor 13-10-2BBARV (Abrasion resistant version)		1
19	638 93 01	Stator 13-08-2b	3-phase 50Hz 2-poles 380V-400V Y 220V-230V D P2=1,7kW Max ambient temp=40 DC Thermal contact 125 DC . 3-phase 50Hz 2-poles 380V-400V Y 220V-230V D P1=1,7KW Max ambient temp=70 DC Thermal contact 125 DC . 3-phase 60Hz 2-poles 460V-480V Y P2=2kW/2,7hp Max ambient temp=40 DC Thermal contact 125 DC	1	1
19	638 93 14	Stator 13-08-2b	3-phase 50Hz 2-poles 380V-400V Y P2=1,7kW Max ambient temp=40 DC Thermal contact 125 DC *** 3-stator leads *** . 3-phase 60Hz 2-poles 440V-480V Y P2=2kW/2,7hp Max ambient temp=40 DC Thermal contact 125 DC *** 3-stator leads ***	1	1
19	638 93 03	Stator 13-08-2b	3-phase 50Hz 2-poles 415V-440V Y P2=1,7kW Max ambient temp=40 DC Thermal contact 125 DC	1	1

Pos. No	Part. No	Denomination	Qty/Version	
			091	181
19	638 93 04	Stator 13-08-2b	1	1
19	638 93 05	Stator 13-08-2b	1	1
19	638 93 06	Stator 13-08-2b	1	1
19	638 93 07	Stator 13-08-2b	1	1
19	638 93 08	Stator 13-08-2b	1	1
19	638 96 03 (Ex)	Stator 13-10-2b	1	1
19	638 95 01	Stator 13-10-2b	1	1
19	638 95 18 (Ex)	Stator 13-10-2b	1	1
19	638 95 03	Stator 13-10-2b	1	1

Pos. No	Part. No	Denomination	Qty/Version	
			091	181
19	638 95 04	Stator 13-10-2b 3-phase 50Hz 2-poles 500V-550V Y P2=2,4kW Max ambient temp=40 DC Thermal contact 125 DC . 3-phase 60Hz 2-poles 575V-600V Y P1=2,8KW Max ambient temp=70 DC Thermal contact 125 DC . 3-phase 50Hz 2-poles 500V-550V Y P1=2,4KW Max ambient temp=70 DC Thermal contact 125 DC . 3-phase 60Hz 2-poles 575V-600V Y P2=2,8kW/3,8hp Max ambient temp=40 DC Thermal contact 125 DC	1	1
19	638 95 05	Stator 13-10-2b 3-phase 50Hz 2-poles 690V Y 400V D P2=2,4kW Max ambient temp=40 DC Thermal contact 125 DC . 3-phase 50Hz 2-poles 690V Y 400V D P1=2,4KW Max ambient temp=70 DC Thermal contact 125 DC	1	1
19	638 95 06	Stator 13-10-2b 3-phase 60Hz 2-poles 460V YSER 230V Y// P1=2,8KW Max ambient temp=70 DC Thermal contact 125 DC . 3-phase 60Hz 2-poles 460V YSER 230V Y// P2=2,8kW/3,8hp Max ambient temp=40 DC Thermal contact 125 DC	1	1
19	638 95 07	Stator 13-10-2b 3-phase 50Hz 2-poles 190V-200V Y P2=2,4kW Max ambient temp=40 DC Thermal contact 125 DC . 3-phase 60Hz 2-poles 200V-220V Y Max P1=2,9KW Max ambient temp=70 DC Thermal contact 125 DC . 3-phase 50Hz 2-poles 190V-200V Y P1=2,4KW Max ambient temp=70 DC Thermal contact 125 DC . 3-phase 60Hz 2-poles 200V-220V Y P2=2,8kW/3,8hp Max ambient temp=40 DC Thermal contact 125 DC	1	1
19	638 95 08	Stator 13-10-2b 3-phase 60Hz 2-poles 380V Y 220V D P1=2,8KW Max ambient temp=70 DC Thermal contact 125 DC . 3-phase 60Hz 2-poles 380V Y 220V D P2=2,8kW/3,8hp Max ambient temp=40 DC Thermal contact 125 DC	1	1
19	638 95 11	Stator 13-10-2b 3-phase 60Hz 2-poles 208V Y P1=2,8KW Max ambient temp=70 DC Thermal contact 125 DC . 3-phase 60Hz 2-poles 208V Y P2=2,8kW/3,8hp Max ambient temp=40 DC Thermal contact 125 DC	1	1
19	638 96 01 (Ex)	Stator 13-10-2b 1-phase 50Hz 2-poles 220V-240V P2=1,5kW Max ambient temp=40 DC Thermal contact 125 DC		1
20	83 65 00	Insulating hose DIAM=30, L=90 MM	2	2
21	83 45 59	Cable tie 200X2.4 PA 6/6 -55+105	3	3
23	94 20 61	Motor cable subcab 4G1.5+2X1.5 OD=15-16	*	*
23	94 20 82	Motor cable subcab 7G2.5+2X1.5 MM2 OD=20-22	*	*

Pos. No	Part. No	Denomination	Qty/Version	
			091	181
23	94 19 90	Motor cable subcab S3X2,5+3X2,5/3+S(4X0.5)	*	
23	94 20 59	Motor cable subcab 4G2.5+2X1.5 OD = 17-18 MM	*	
23	94 20 60	Motor cable subcab 4G4+2X1.5 OD=20-22 MM	*	
23	94 20 41	Motor cable subcab 4G1.5 OD = 10.5-11.5 MM		*
23	94 20 42	Motor cable subcab 4G2.5 OD=12.5-13.5 MM		*
23	94 20 59	Motor cable subcab 4G2.5+2X1.5 OD = 17-18 MM		*
23	94 19 75	Motor cable silicone 4G2.5 OD = 10.5-11.5 MM		*
24,6	82 17 61	Cutting screw TAPTITE-M6X12	1	1
24,7	83 43 58	Cable lug INSUL.UL/CSA 1.04-2.6 MM2	1	2
24,8	83 42 67	Terminal block	3 conductors	8
24,8	83 42 65	Terminal block	2 conductors	5
24,8	83 44 23	Closed end splice 5.1-10.6;(AWG 18-8) L=38	1	
24,8	83 44 24	Closed end splice 3-6(AWG 12-10) L=18	2	2
24,1	397 81 00 (Ex)	Gland screw FOR CABLE ENTRY	1	
24,7	83 43 62	Cable lug	0.5 - 1.65 mm ² ; M6	1
24,7	83 42 96	Cable lug 2.5-6 MM ² ;M6	1	
24,1	397 81 00 (Ex)	Gland screw FOR CABLE ENTRY		1
34	82 35 73	Plain washer 6-A4-170	2	2
37	504 78 07	Cable unit	1	1
38	518 89 02	Leakage detect.unit (FLS)	1	1
40	645 58 00 (Ex)	Bearing holder GG-20	1	
40	645 57 00	Bearing holder GG-20		1
41	83 30 15	Ball bearing 3305A-2Z/C3VT113	1	1
42	82 80 90	O-ring 59.5X3 FPM	1	
43	594 93 00 (Ex)	Bearing cover	1	
44	720 45 07	Mechanical seal AL2O3/CARBON	1	1
44	720 45 00	Mechanical seal WCCR/WCCR	1	1
46	555 96 03	Oil housing bottom COATED NBR M8 THREADED	1	1
48	82 79 12	O-ring 13.3X2.4 FPM	1	1
49	303 44 03	Hex.socket hd screw	1	1
53	720 45 01	Mechanical seal WCCR/AL2O3	1	1
53	720 45 00	Mechanical seal WCCR/WCCR	1	1

Pos. No	Part. No	Denomination	Qty/Version	
			091	181
53	720 45 02	Mechanical seal WCCR/WCCR	1	1
136	220 25 02	Gland screw		1
137	82 35 76	Plain washer 10-A4-170		2
138	275 80 02	Ring		1
139	84 32 31	Level switch		1
140	84 60 48	Clip DIAM.16		1
141	82 23 29	Hexagon nut M4-A4-70		1
142	83 93 97	Protective cap		1
143	81 73 41	Slotted head screw M4X10-A4-70		1
144	82 62 12	Retaining ring SGH 62		1
145	82 50 60	Sealing washer DUBO NR 301		3
166	663 85 00	Connection plate	1	1
169	667 40 00	Sticker	2	2
215	82 40 61	Plain washer (10)-22 MM	1	
215	82 40 61	Plain washer (10)-22 MM		1
216	84 17 92	Seal sleeve (14)-16 MM	1	1
216	84 17 93	Seal sleeve (16)-18 MM	1	1
216	84 17 94	Seal sleeve (18)-20 MM	1	1
216	84 17 95	Seal sleeve (20)-22 MM	1	
216	84 17 90	Seal sleeve (10)-12 MM		1
216	84 15 86	Seal sleeve (10)-12 MM		1
216	84 17 91	Seal sleeve (12)-14 MM		1
216	84 17 95	Seal sleeve (20)-22 MM		1
217	678 58 16 (Ex)	Cable clip (14)-16 MM	1	1
217	678 58 18 (Ex)	Cable clip (16)-18 MM	1	1
217	678 58 20 (Ex)	Cable clip (18)-20 MM	1	1
217	678 58 22 (Ex)	Cable clip (20)-22 MM	1	
217	678 58 12 (Ex)	Cable clip (10)-12 MM		1
217	678 58 14 (Ex)	Cable clip (12)-14 MM		1
217	678 58 22 (Ex)	Cable clip (20)-22 MM		1

List of parts, hydraulic unit

Pos. No	Part. No	Denomination	Qty/Version	
			091	181
45	82 00 19	Hex.socket hd screw M6X35-A2-70	3	3
63	397 88 00	Sleeve	1	1
64	645 64 00	Torque flow impeller	1	1
		Medium head "D-MT", Curve no: 230, 50 Hz, 3-phase		

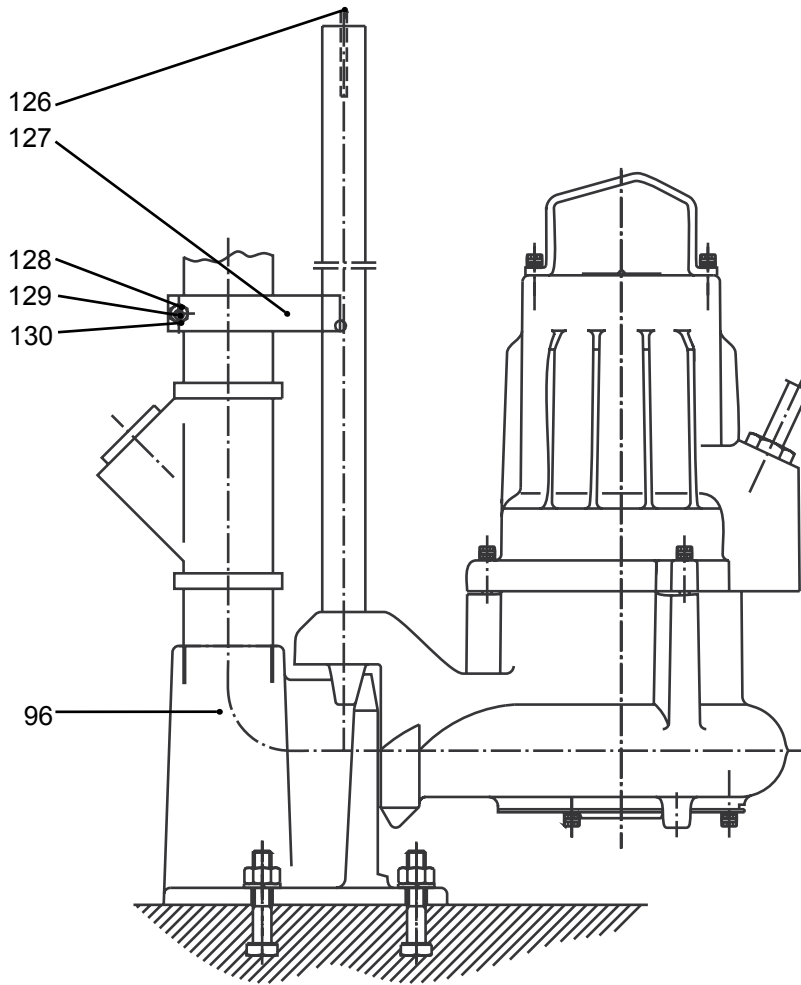
Pos. No	Part. No	Denomination	Qty/Version		
			091	181	
64	645 64 01	Torque flow impeller	Medium head "D-MT", Curve no: 232, 50/60 Hz, 3-phase	1	1
64	645 64 02	Torque flow impeller	Medium head "D-MT", Curve no: 234, 50/60 Hz, 1-phase / 3-phase	1	1
64	645 64 03	Torque flow impeller	Medium head "D-MT", Curve no: 236, 60 Hz, 1-phase / 3-phase	1	1
64	682 65 00	Impeller compl.	High head "C-HT", Curve no: 260, 50 Hz, 3-phase, Stainless steel	1	1
64	658 49 00	Impeller	High head "C-HT", Curve no: 262, 50 Hz, 3-phase, Stainless steel	1	1
64	658 49 01	Impeller	High head "C-HT", Curve no: 264, 60 Hz, 3-phase, Stainless steel	1	1
64	658 49 02	Impeller compl.	High head "C-HT", Curve no: 266, 50/60 Hz, 1-phase / 3-phase, Stainless steel	1	1
64	555 95 03	Torque flow impeller	Medium head "D-MT", Curve no: 270, 50 Hz, 3-phase, Abrasion resistant	1	1
64	555 95 04	Torque flow impeller	Medium head "D-MT", Curve no: 272, 50/60 Hz, 3-phase, Abrasion resistant	1	1
64	555 95 02	Torque flow impeller	Medium head "D-MT", Curve no: 274, 60 Hz, 3-phase, Abrasion resistant	1	1
64	645 64 04	Torque flow impeller	Medium head "D-MT", Curve no: 238, 50 Hz, 1-phase		1
67	555 63 04	Pump housing	HT MT C D DN 50 ISO G2 Mtrl: Grey cast iron Installation: F . Pump housing C D DN 50 ISO G2 Installation: F	1	1
67	555 63 05	Pump housing	C D DN 50 2-11 1/2 NPT Installation: F	1	1
67	555 62 02	Pump housing	HT MT C D DN 50 Sliding bracket Installation: P . C D DN 50 Sliding bracket Installation: P	1	1
67,1	555 59 01	Seal ring PERBUNAN, GREY		1	1
67	555 94 00	Pump housing	MT D DN 50 ISO G2 Mtrl: Hardened cast iron for heavily contaminated water Installation: F	1	1
72	83 02 99	Hex.socket hd screw M8X20-A4-70		1	1
77	81 93 93	Slotted head screw M6X20-A4-70		3	3
78	516 24 00	Strainer bottom POLYETHYL. PEHD		1	1
79	645 66 01	Suction cover	D-impeller MT 50Hz 3-phase Max ambient temp=40 DC Mtrl. Grey cast iron . D-impeller MT 50Hz 3-phase Max ambient temp=40 DC Mtrl. Grey cast iron	1	1
79	645 66 00	Suction cover	C-impeller HT 50Hz 3-phase Max ambient temp=40 DC Mtrl. stainless steel (ASTM 304)	1	1
90	82 74 03	O-ring 54.2X5.7 NBR		1	1

Installation Components

CP/DP

Twin guide bars

CP/DP 3057

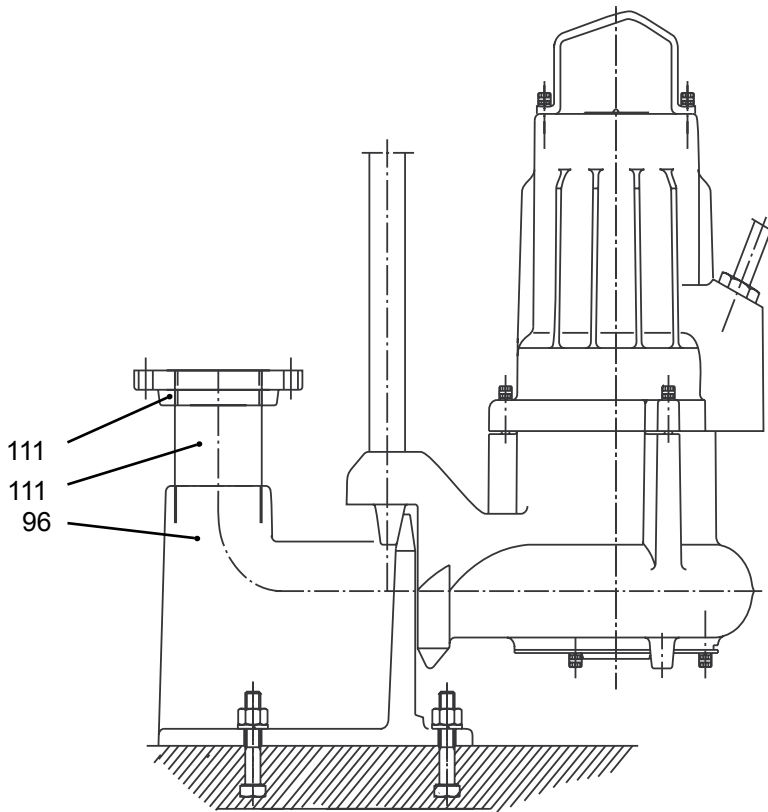


30638

CP/DP

Coupling

CP/DP 3057



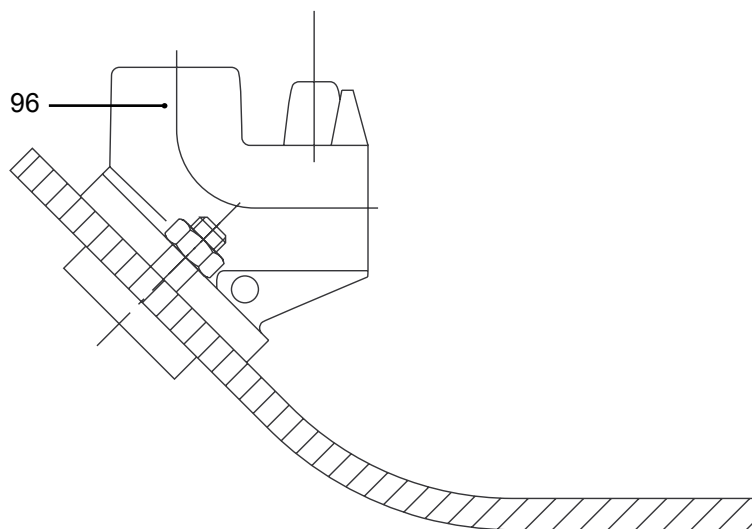
30639

CP/DP

TOP

CP/DP 3045/3057

TOP 50/65

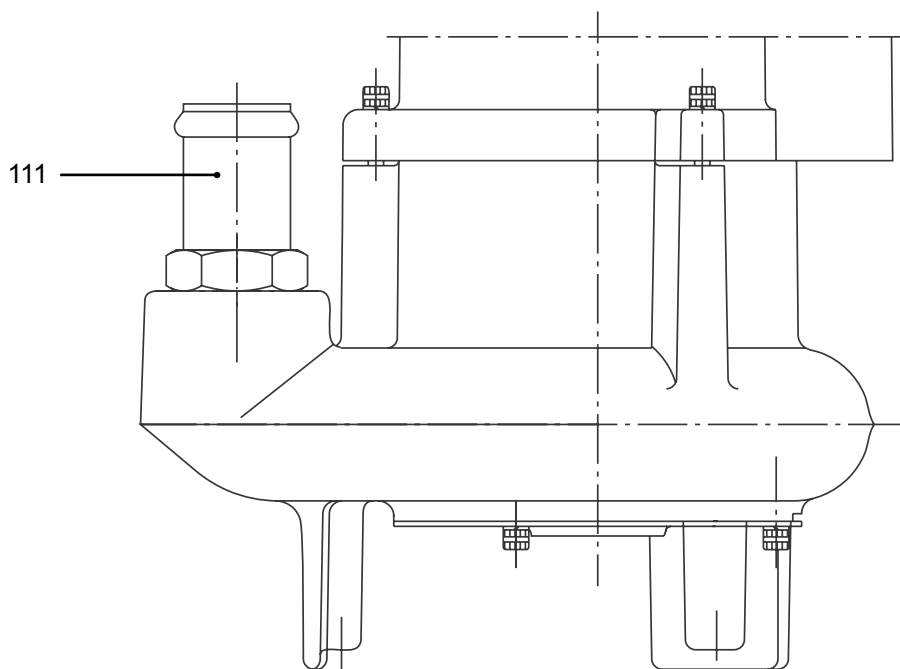


30642

CF/CS/DF/DS

Hose

CF/CS/DF/DS 3045/3057

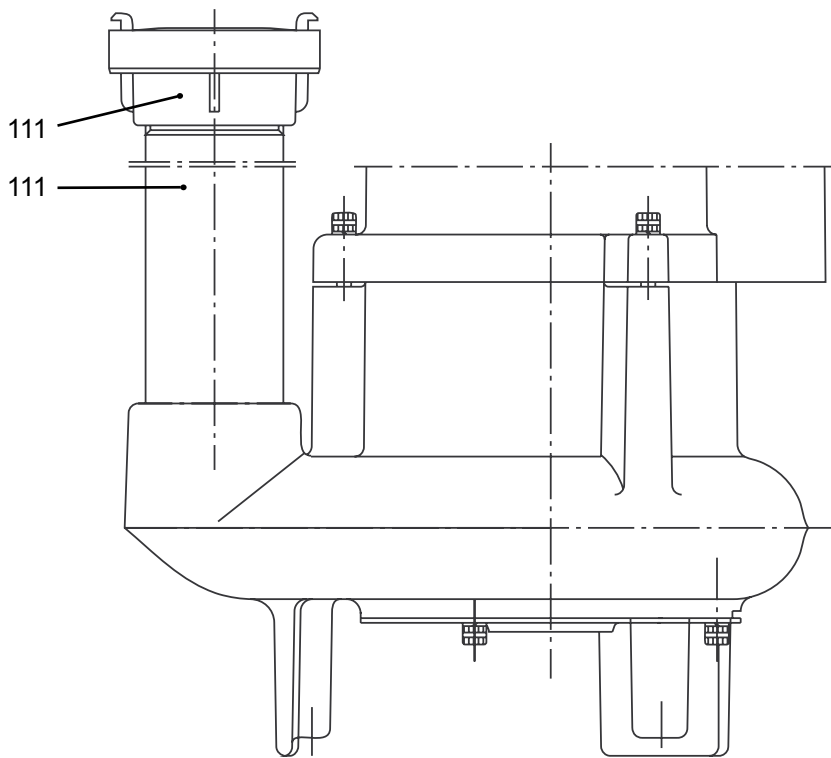


30640

CF/CS/DF/DS

Quick coupling

CF/CS/DF/DS 3045/3057



30641

List of parts

Pos. No	Part. No	Denomination	Qty/Version		
			091	181	
96	486 55 00	Discharge connection IN/OUT 50/50 MM	Installation P Hydraulic: C D Thread : ISO G2 Inner DN 50 Ordered separately	1	1
96	486 55 01	Discharge connection IN/OUT 50/50 MM	Installation P Hydraulic: C D Thread : NPT 2-11 1/2 Inner DN 50 Ordered separately	1	1
96	619 95 00	Discharge con.stat. IN/OUT 50/50 MM	TOP 50 TOP 65 Installation P Thread : ISO G2 Inner DN 50 Ordered separately	1	1
96	619 95 01	Discharge con.stat. IN/OUT 50/50 MM	TOP 50 TOP 65 Installation P Thread : NPT 2-11 1/2 Inner DN 50 Ordered separately	1	1
96	555 48 00	Discharge con.stat. IN/OUT 50/R3"	Installation P Hydraulic: C D Thread : ISO G3 Inner DN 80 Ordered separately	1	1
96	555 48 01	Discharge connection NPT 3-8	Installation P Hydraulic: C D Thread : 3-8 NPT Inner DN 50 Ordered separately	1	1
101	669 77 00	Guide bracket unit SS		1	1
108	461 16 00	Discharge connection		1	1
108,1	81 41 32	Hexagon head screw M10X30-A2-70		2	2
108,2	81 41 32	Hexagon head screw M10X30-A2-70		1	1
108,3	82 23 33	Hexagon nut M10-A4-70		1	1
108,4	82 33 15	Shackle		1	1
108,5	82 77 47	O-ring		1	1
108,6	464 40 00	Muff		1	1
108,7	464 41 00	Bush		1	1
108,8	464 43 00	Clamping piece		1	1
111	83 05 60	Nipple pipe CONN. 80 GALV		1	1
111	83 15 35	Flange DN 80		1	1
111	83 91 99	Coupling	Discharge connection polyamid Installation: S, F for hose Hydraulic: C D DN 50 Thread : NPT 2-11 1/2	1	1
111	83 92 71	Coupling POLYPROPYLENE PP R 2	Discharge connection Installation F For hose DN 50 DN 50	1	1
111	83 56 33	Discharge connection THREAD 2"FOR HOSE INTERNA		1	1
111	83 05 09	Nipple pipe CONN. 50, L=180 MM		1	1
111	83 18 24	Coupling part DN52 INNER G2B STORZ		1	1
111	83 19 31	Coupling part DN52 FOR HOSE 2" STORZ		1	1
126	495 27 00	Clip		1	1
127	495 26 00	Clip		1	1
128	81 55 59	Hexagon head screw M8X65-A4-70		1	1

Pos. No	Part. No	Denomination	Qty/Version	
			091	181
129	82 23 32	Hexagon nut M8-A4-70	1	1
130	82 35 74	Plain washer 8-A4-170	1	1
134	554 30 02	Starter 351-400-B-516-4	1	1
134	554 30 03	Starter 351-400-B-516-6,3	1	1
134	554 30 12	Starter 351-400-B-532-4		1
134	554 30 13	Starter 351-400-B-532-6,3		1
134	554 22 13	Starter 1.5 KW 230 V/50 HZ		1
134	554 23 33	Starter 1.3 KW 230 V/60 HZ		1
134	83 49 43	Plug contact 380-415 V 3 PH 16A CEE 5P		1

Service Parts

List of parts

Pos. No	Part. No	Denomination	Qty/Version	
			091	181
800	80 32 77	O-ring kits 3057.180/.18190 GR		1
900	601 89 52	Basic repair kit	With mechanical seal: AL2O3/CSB-TYPE 0	1
900	601 89 53	Basic repair kit	With mechanical seal: WCCR/CERAMIC	1
901	90 17 52	Oil	*	*