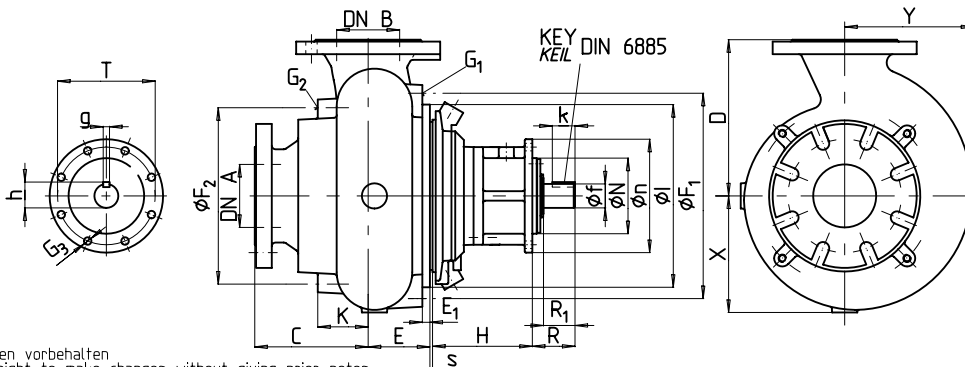


HYDRAULIC HYDRAULIK	A	B	C	D	E	F	G	M	O	P	U	U ₁	X	Y	Z	s
B02Q -H	65	50	116	160	45	100	12	30	55	40	130	15	112	120	---	19
-M																
B050 -H	80	80	160	210	60	150	15	50	50	35	200	12	145	7.5	8	4
-M																
C080	100	80	180	210	60	190	15	---	---	25	220	20	160	152	10	4

BEARING FRAME LAGERSTUHL	G ₃	N	q TYPE	H K TYPE	R	R ₁	T	f	g	h	k	n	KEY KEIL
BDM.W	8xφ12	130h11	195	---	80	58	155	38 k5	10	41	45	180	8x10
CDM.W			184	---									
DDM.W			189	199									
EDM.W			178	---									
DFM.W	4xφ14	180h11	228	239	134	101	215	60 m6	18	64	80	250	11x18
EFM.W			217	---									
EGM.W			295	---									
BDZ.W	8xφ12	130h11	197	---	80	58	155	38 k5	10	41	45	180	8x10
CDZ.W			186	---									
DDS.W			223	232									
EDS.W			212	---									
EGS.W	8xφ18	215h11	320	---	135	105	250	60 m6	18	64	80	290	11x18

HYDRAULIC HYDRAULIK	A	B	C	D	E	E ₁	F ₁	F ₂	G ₁	G ₂	I	K	X	Y	s
D03Q/D080	100	80	165	215	72	12	326	280	---	4xM12	290	65	162	179	4
D04Q/D100		100	180	248	98							80	185	210	
E03Q -LH	150	80	208	285	62	---	380	380	8xM12	8xM12	---	77	216	229	4
E080 -MH												---	---	---	
-L/M/H	150	125	230	330	87	---	380	380	8xM12	8xM12	---	87	253	274	4
-LH			---									---	---		
E05Q -MH			---									---	---		
E125 -HH/-SH			---									---	---		
-ML	200	200	288	400	100	---	---	---	---	---	---	88	315	350	4
-HL/SL			298									---	---		
E08Q -ML	200	200	276	400	100	---	---	---	---	---	---	88	315	350	4
-HL/SL			285									---	---		
E200-ML/HL/SL	200	200	278	400	100	---	---	---	---	---	---	88	315	350	4



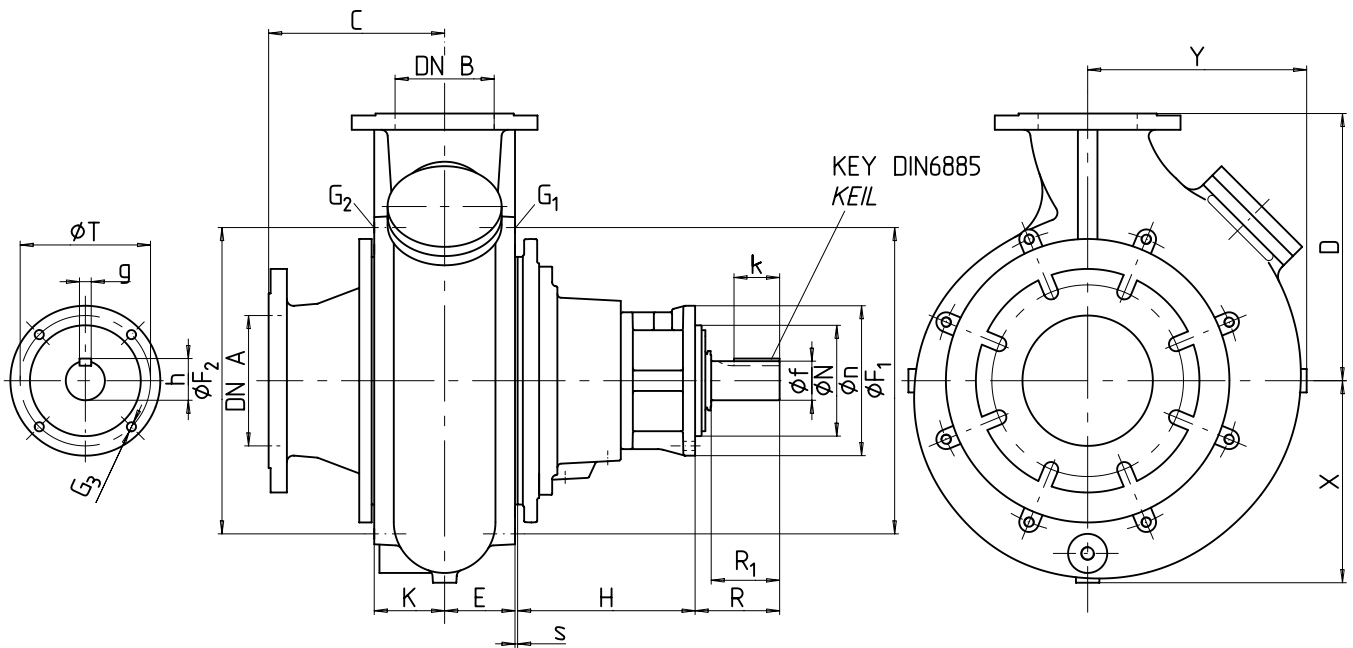
DIN/EN 1092
 A B02Q/B050 = PN 6
 B B02Q = PN 6
 B B050 = PN 16
 A,B ≤ DN 150 = PN 16
 A,B ≤ DN 200 = PN 10

Konstruktionsänderungen vorbehalten
 Hidrostat reserve the right to make changes without giving prior notes
 Hidrostat se reserve tous droits de changement de construction

File :

Drawn. by /Bearb. Dat. Vis. : 05.05.00 db
 Approved by/Gepr. Dat. Vis. : 05.05.00 db

No : 96 - M5377d



BEARING FRAME LAGERSTUHL	G ₃	N	H	R	R ₁	T	f	g	h	k	n	KEY KEIL
FFM.W	4xØ14	180h11	252	134	101	215	60m6	18	64	80	250	11x18
HFM.W												
FGM.W	8xØ18	215h11	278	135	105	250	60m6	18	64	80	290	11x18
HGM.W												
FHM.W	8xØ22	300h11	320	169	130	350	90m6	25	95	100	400	14x25
HHM.W												
FFS.W	4xØ14	180h11	274	134	101	215	60m6	18	64	80	250	11x18
HFS.W												
FGS.W	8xØ18	215h11	135	105	250	60m6	18	64	80	290	11x18
HHS.W	8xØ22	300h11	169	130	350	90m6	25	95	100	400	14x25

HYDRAULIC HYDRAULIK	A	B	C	D	E	F ₁	F ₂	G ₁	G ₂	K	X	Y	s
F04K/F100	200	100	245	364	80	470	470	8xM16	8xM16	80	275	297	4
F06K -M			150	270	410					108	108	320	
-H/S		235		125							365	405	
F06Q/F150-E	250	250	323	475	127	570	570	8xM16	8xM16	96	346	368	4
F10K -MD			125	340	530					132	132	390	
-HD/SD/SS		200		285							316	132	
H05K -MH/S	250	200	328	530	132	570	570	8xM16	8xM16	132	390	425	4
H08K -M			125							398	530	132	
-MH/H/S		200		285	316					132			
H200 -MM	250	200	328	530	132	570	570	8xM16	8xM16	132	390	425	4
-S			200							285	316	132	
	250	200	316	530	132					570	570	8xM16	

DESCRIPTION / ERKLÄRUNG:

DN = NOMINAL DIAMETER / NENNWEITE

PN = NOMINAL PRESSURE / NENNDRUCK

Konstruktionsänderungen vorbehalten
Hidrostat reserve the right to make changes without giving prior notice
Hidrostat se reserve tous droits de changement de construction

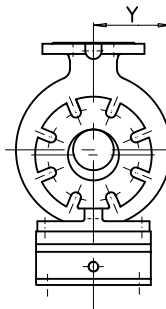
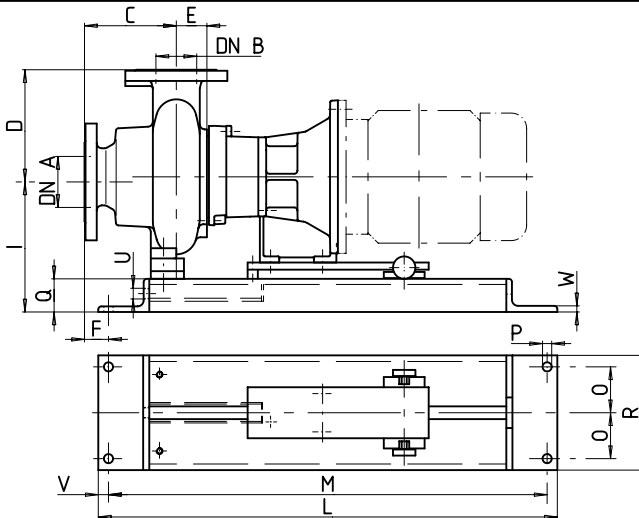
DN A/DN B ≤ 150 = PN16 DIN EN 1092 (DIN2533)
DN A/DN B ≥ 200 = PN10 DIN EN 1092 (DIN2532)

A e n d . . :

Drawn. by / Bearb. Dat. Vis. : 28.03.02 db
Approved by / Gepr. Dat. Vis. : 28.03.02 db

No : 96 - M5386f

DISMOUNTING BASE PLATE 6HX-....
 AUSBAU-GRUNDPLATTE



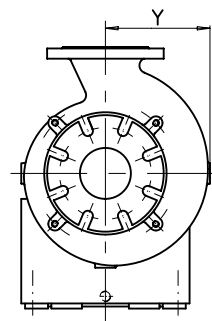
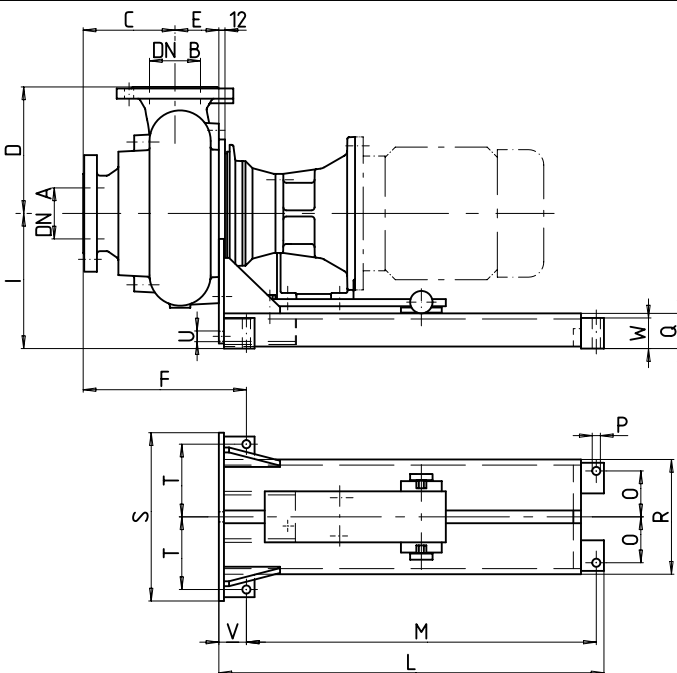
DESCRIPTION / ERKLÄRUNG:

DN = NOMINAL DIAMETER
 NENNWEITE
 PN = NOMINAL PRESSURE
 NENNDRUCK

A,B ≤ DN150 = PN16 DIN EN 1092
 A,B ≥ DN200 = PN10 DIN EN 1092

HYDRAULIC HYDRAULIK	A	B	C	D	E	Y	BASE PLATE GRUNDPLATTE	F
C080	100	80	180	220	60	152	6HX-C112	50
							6HX-C132	95
							6HX-C180	

BRG. FRAME LAGERSTUHL	BASE PLATE GRUNDPLATTE	WEIGHT GEWICHT KG	MOTOR	I	L	M	O	P	Q	R	U	V	W
CCM.X/CCZ.X CDM.X/CDZ.X	6HX-C112	22	100/112	200	800	760	90	15	50	220	G 1/2"	20	12
	6HX-C132	32	132	255	870	810		16	69	225		30	
	6HX-C180	41	160/180	310	950	920		70	70	225		15	60



HYDRAULIC HYDRAULIK	A	B	C	D	E	Y	BASE PLATE GRUNDPLATTE	F	
D080	100	80	165	215	60	179	6HX-D112	365	
							6HX-D132/D180/D200	279	
D100	100	100	180	248	86	210	6HX-D112	406	
							6HX-D132/D180/D200	320	
E03Q E080	150	80	208	285	62	229	6HX-E132/E180	336	
-LH -MH								383	
E05Q E125	150	125	182	330	87	274	6HX-E132/E180	335	
								-L/M/H	441
								-LH	451
								-MH	442
E08Q	200	200	276	400	100	350	6HX-E132/E180	451	
								-HH/-SH	451
								-ML	442
E200-ML/HL/SL	200	200	278	285	400	100	350	451	
								444	

BRG. FRAME LAGERSTUHL	BASE PLATE GRUNDPLATTE	WEIGHT GEWICHT KG	MOTOR	I	L	M	O	P	Q	R	S	T	U	V	W
DCM.X/DCZ.X DDM.X/DDZ.X DDS.X/DFS.X DFM.X	6HX-D112	24	100/112	210	610	450	90	15	50	220	330	140	G 1/2"	140	12
	6HX-D132	32	132	265	770	686		16	69	225	345	142.5			
	6HX-D180	62	160/180	320	1020	936	110	19	70.5	265	385	162.5		54	
	6HX-D200	63	200	340				16	124	265	400	167.5		66	
EDM.X/EDS.X EFM.X/EF.S.X	6HX-E132	50	132	320	822	726	110	16	124	265	400	167.5	66		
	6HX-E180	63	160/180	320	1047	956		19	70.5	265	400	167.5	66		

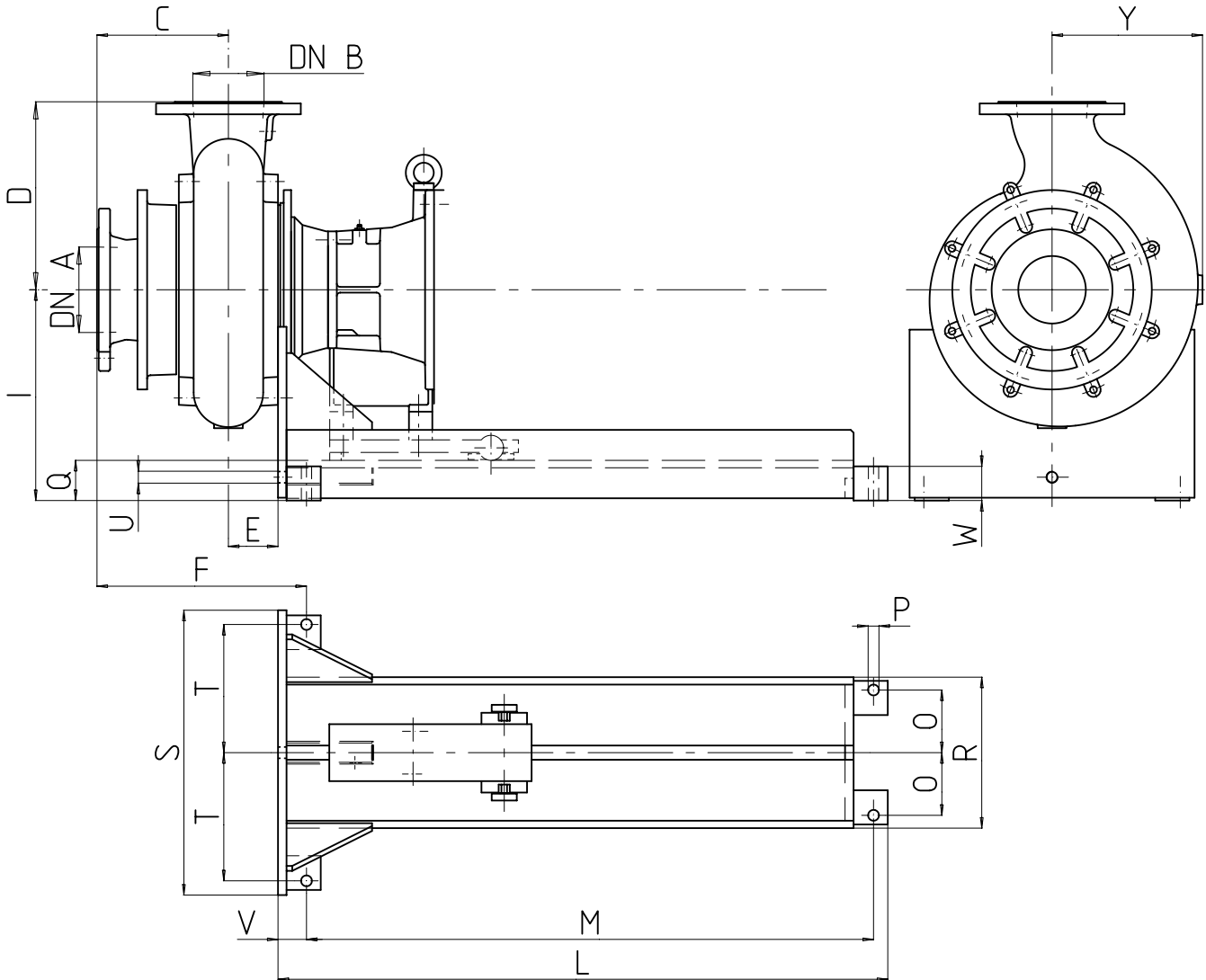
Konstruktionsänderungen vorbehalten
 Hidrostat reserve the right to make changes without giving prior notes
 Hidrostat se reserve tous droits de changement de construction

Drawn by /Bearb. Dat. Vis. :03.02.03 erg
 Approved by/Gepr. Dat. Vis. :03.02.03 dbr

No : 96 - M5337i

DISMOUNTING BASE PLATE
AUSBAU-GRUNDPLATTE

6HX-F180



HYDRAULIC HYDRAULIK	A	B	C	D	E	Y	BASE PLATE GRUNDPLATTE	F
F04K -MH -S	200	100	245	364	80	297	6HX-F180	375
F06K -M -H/S								428
F10K -MD -HD/SD/SS	250	250	270	410	108	346		488
			323 340					500 517

BRG. FRAME LAGERSTUHL	BASE PLATE GRUNDPLATTE	WEIGHT GEWICHT KG	MOTOR	I	L	M	O	P	Q	R	S	T	U	V	W
FFM.X/FFS.X	6HX-F180	72	160	370	1070	995	110	19	70.5	265	500	225	G1/2"	50	60
			180												
			200												

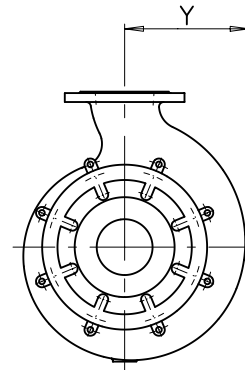
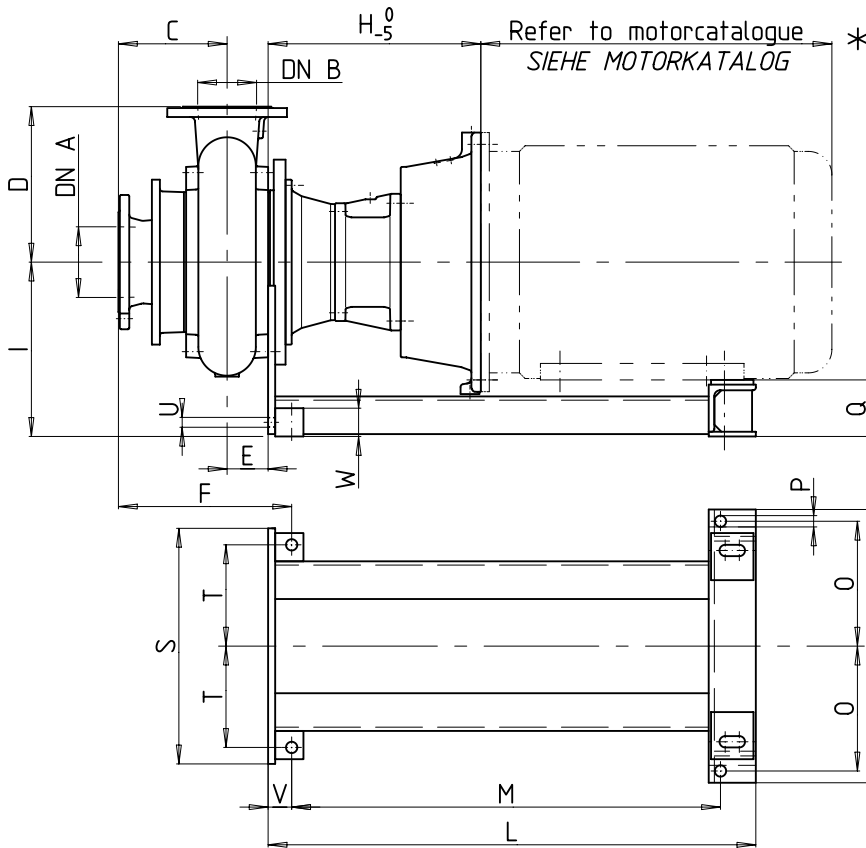
Konstruktionsänderungen vorbehalten
Hidrostat reserve the right to make changes without giving prior notes
Hidrostat se reserve tous droits de changement de construction

A,B ≤ DN 150 = PN 16 DIN/EN 1092
A,B ≥ DN 200 = PN 10 DIN/EN 1092

A e n d . : Drawn. by /Bearb. Dat. Vis. :03.02.03 erg
Approved by/Gepr. Dat. Vis. :03.02.03 db No : 9 6 - M 5 4 5 1 e

BASE PLATE
 GRUNDPLATTE

HX-E.../HX-F...



* IEC MOTORS:
 USE MOUNTING B35
 (FOOT/FLANGE MOUNTED,
 MOTOR-FLANGE DIMENSIONS
 SEE 93-M4802)

* IEC MOTOREN:
 BAUFORM B35 VERWENDEN
 (FUSS/FLANSCH-AUSFÜHRUNG,
 MOTOR-FLANSCHMASSE
 SIEHE 93-M4802)

HYDRAULIC HYDRAULIK	A	B	C	D	E	Y	BASE PLATE GRUNDPLATTE	F
E03Q	150	80		285	62	229	6HX-E	
E080 -MH			208					
			230			364		
E05Q	150	125		330	87	274		
-MH			182					
E125 -HH/-SH			200					334
	200		288					422
-ML			298		432			
E08Q -ML	200	200	276	400	100	350		
-HL/SL			285					
E200 -ML/HL/SL			278				425	
F04K -MH	200	100	245	364	80	297	6HX-F. . . .	
-S								
F06K -M	150		270	410	108	346		
-H/S			330					
F10K -MD	250	250	323	475	127	405		
-HD/SD/SS			340					

BRG. FRAME LAGERSTUHL	BASE PLATE GRUNDPLATTE	WEIGHT GEWICHT KG	MOTOR	H	I	L	M	O	P	Q	R	S	T	U	V	W
EGM.X	6HX-EG250	47	250	465	370	1035	910	265	24	120	580	480	215	G1/2"	47	60
FFM.X	6HX-F225	52	225	418		930	750	265		145	580	500	225		80	105
FGM.X				442		1090	970	290		85	630	550	245		70	85
FGM.X	6HX-FG250	57	250	452												

Konstruktionsänderungen vorbehalten
 Hidrostat reserve the right to make changes without giving prior notes
 Hidrostat se reserve tous droits de changement de construction

A,B ≅ DN 150 = PN 16 DIN 2533 DIN/EN 1092
 A,B ≅ DN 200 = PN 10 DIN 2532 DIN/EN 1092

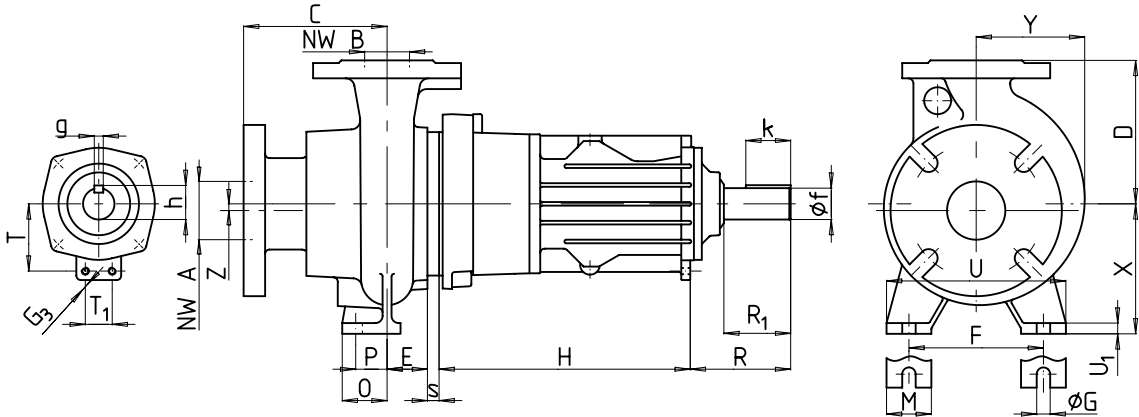
A e n d . :

Drawn. by /Bearb. Dat. Vis. :17.01.00 db
 Approved by/Gepr. Dat. Vis. :18.01.00 db

No : 98 - M5959c

LONG BEARING FRAME PUMPS
LANGE LAGERSTUHL PUMPEN
.D..F/.D..O

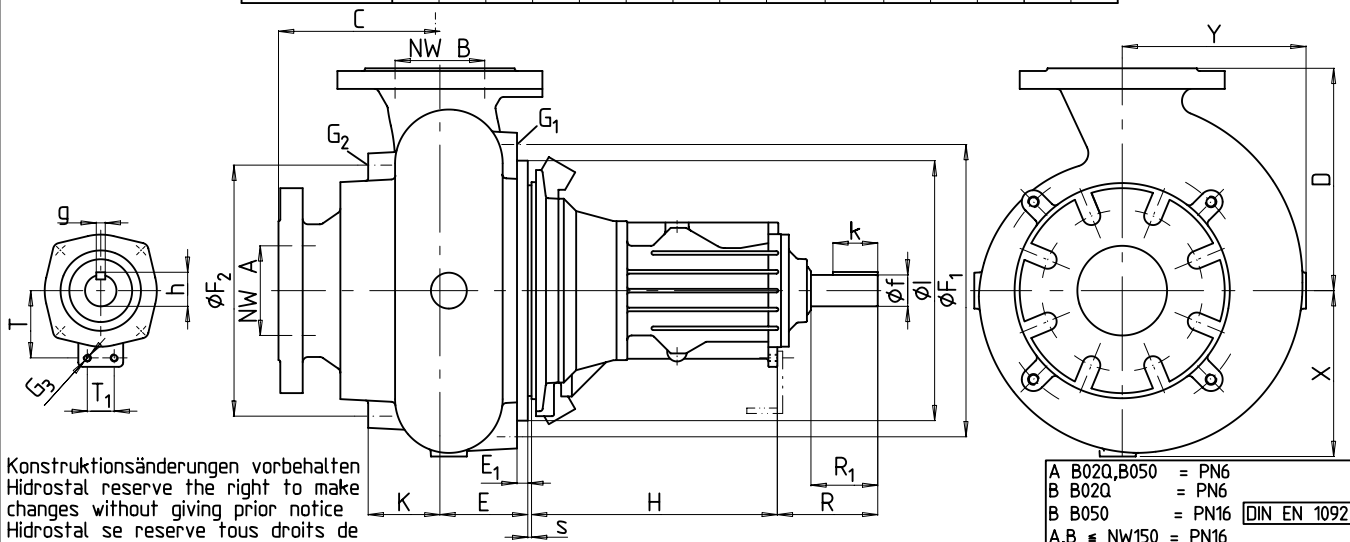
HYDRAULIC
HYDRAULIK
B-E



HYDRAULIC HYDRAULIK	A	B	C	D	E	F	G	M	O	P	U	U ₁	X	Y	Z	s
B02Q -H	65	50	116	160	45	100	12	30	55	40	130	15	112	120	---	19
-M																
B050 -H	80		160			150	15	50	50	35	200	12	145	7.5	15	
-M															8	
C080	100	80	180	210	60	190	15	---		25	220	20	160	152	10	4

BEARING FRAME LAGERSTUHL	G ₃	H	R	R ₁	T	T ₁	f	g	h	k	KEY KEIL
BDM.F/BDM.O	2xM8	280	105	78	75	30	35 k5	10	38	50	8x10
CDM.F/CDM.O		268.5									
DDM.F/DDM.O		274									
EDM.F/EDM.O		263									
DDS.F/DDS.O		309									
EDS.F/EDS.O		301									

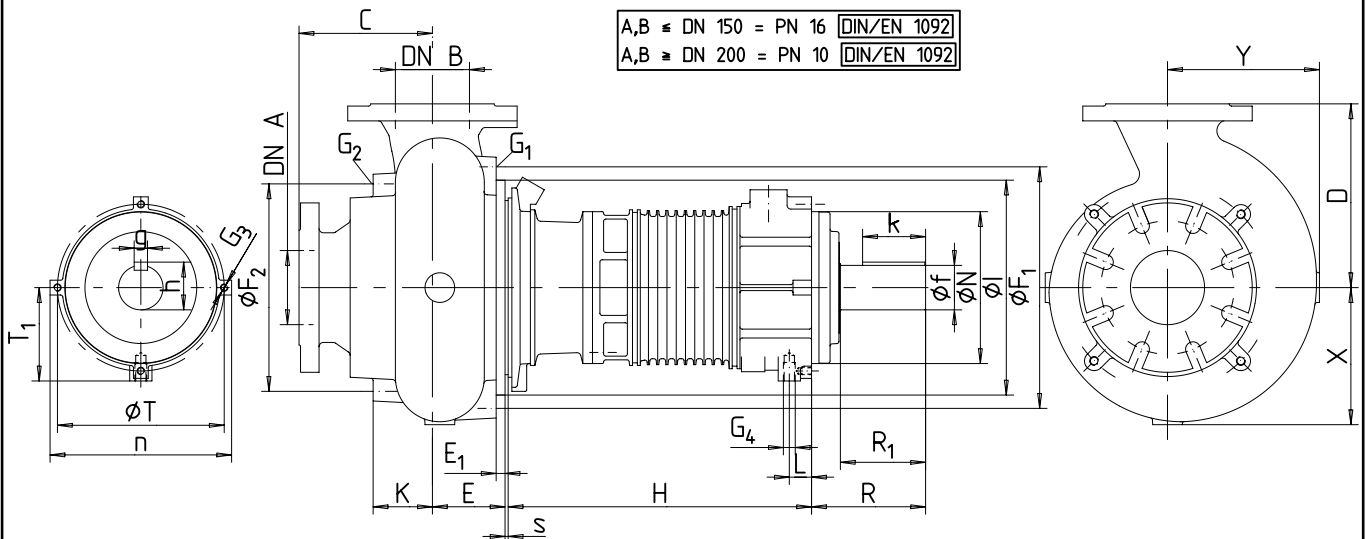
HYDRAULIC HYDRAULIK	A	B	C	D	E	E ₁	F ₁	F ₂	G ₁	G ₂	I	K	X	Y	s		
D03Q/D080	100	80	165	215	72	12	326	280		4xM12	290	65	162	179	4		
D04Q/D100		100	180	248	98							80	185	210			
E03Q -LH	150	80	208	285	62	---	380	380	8xM12	8xM12	---	77	216	229	87	253	273
E080 -MH			230														
-L/M/H/S		182	330	87	87							253	273				
-LH		200															
E05Q-MH		288															
E125 -HH/-SH		298															
-ML	276	400	100								88	315	350				
-HL/SL	285																
E08Q -ML	200	200	278														
E200-ML/HL/SL																	



Konstruktionsänderungen vorbehalten
Hidrostal reserve the right to make
changes without giving prior notice
Hidrostal se reserve tous droits de
changement de construction

A B02Q,B050	= PN6
B B02Q	= PN6
B B050	= PN16
A,B ≠ NW150	= PN16
A,B ≠ NW200	= PN10

Aend.: Drawn by /Bearb. Dat. Vis. : 27.05.02 db
Approved by/Gepr. Dat. Vis. : 27.05.02 db No : 96 - M5383b



A,B ≤ DN 150 = PN 16 DIN/EN 1092
 A,B ≥ DN 200 = PN 10 DIN/EN 1092

BEARING FRAME LAGERS TUHL	G ₃	G ₄	Q-TYPE K-TYPE		L	N	R	R ₁	T	T ₁	f	g	h	k	n	KEY KEIL
			Q-TYPE	K-TYPE												
DFM.F/DFM.O	4xM10	1xM16	409.5	420	30	205	154	115	225	126	60 m6	18	64	80	245	11x18
EFM.F/EFM.O			398.5													
FFM.F/FFM.O			434													
HFM.F/HFM.O			501													
EGM.F/EGM.O	4xM12	1xM20	485		40	235	161.5	115	260	145	60 m6	18	64	80	284	11x18
FGM.F/FGM.O			426.5	437												
HGM.F/HGM.O			475													
DFS.F/DFS.O	4xM10	1xM16	426.5	437	30	205	154	115	225	126	60 m6	18	64	80	245	11x18
EFS.F/EFS.O			475													
EGS.F/EGS.O	4xM12	1xM20	526		40	235	161.5	115	260	145	60 m6	18	64	80	284	11x18

HYDRAULIC HYDRAULIK	A	B	C	D	E	E ₁	F ₁	F ₂	G ₁	G ₂	I	K	X	Y	s				
D03Q/D080	100	80	165	215	72	12	326	*		*	290	65	162	179					
D04Q/D100		100	180	248	98					4xM12		80	185	210					
E03Q -LH E080 -MH	150	80	208	285	62				8xM12	8xM12		77	216	229	4				
-L/M/H/S			125	230	330							87	380	380		8xM12	8xM12	87	253
-LH		182																	
-MH		200																	
-HH/-SH		288																	
-ML		298																	
-HL/SL	276																		
E08Q -ML -HL/SL	200	200	285	400	100							88	315	350					
E200-ML/HL/SL		278																	
F04K/F100	100	245	364	80								80	275	297	4				
F06K -M -H/S	150	270	330	410	108		470	470					108	320	346				
F06Q/F150-E		235																	
F10K -MD -HD/SD/SS	250	323	340	475	127				8xM16	8xM16			125	365	405				
H05K -MH/S		125														280	460	96	96
H08K -M -H/S	250	328	398	530	132		570	570					132	390	425				
H200 -MM		285																	
-S		316																	

Hydraulic H12K/H12Q/H300 see section 'HYDRAULIC ENDS'
 Hydraulik H12K/H12Q/H300 siehe Abschnitt 'HYDRAULIK'

Konstruktionsänderungen vorbehalten
 Hidrostat reserve the right to make
 changes without giving prior notice
 Hidrostat se reserve tous droits
 de changement de construction

* Only machined on customers request
 Nur auf Kundenwunsch gebohrt